

Light is an indispensable value and a characterizing element of architecture. Light has the power to change the environmental atmosphere and personal sensations in an instant.

At Luxformae, our mission is to integrate the ethereal immateriality of light to define architectural spaces blending enhanced design and ergonomics with unique style and excellent performance.

We pride ourselves on sourcing unique design solutions you can trust from the moment you discover our offerings.

Our best clients know that when they come to Luxformae, they can expect quality products that can be used beyond just the front of the house. They know they can send us concept renderings and images, and we will transform those ideas into reality by sourcing quality solutions. They know that if there is an issue, our team will work to reconcile concerns quickly and efficiently.

We pride ourselves on creating solutions you can trust from the moment you get in touch.

Through our uncompromising commitment to quality control and our expertise in risk assessments and technical details, you can rest assured that we have everything covered.

It's a tried and trusted approach that allows us to deliver exactly what you want, when you want, and at the right price.

We simply wouldn't have it any other way.



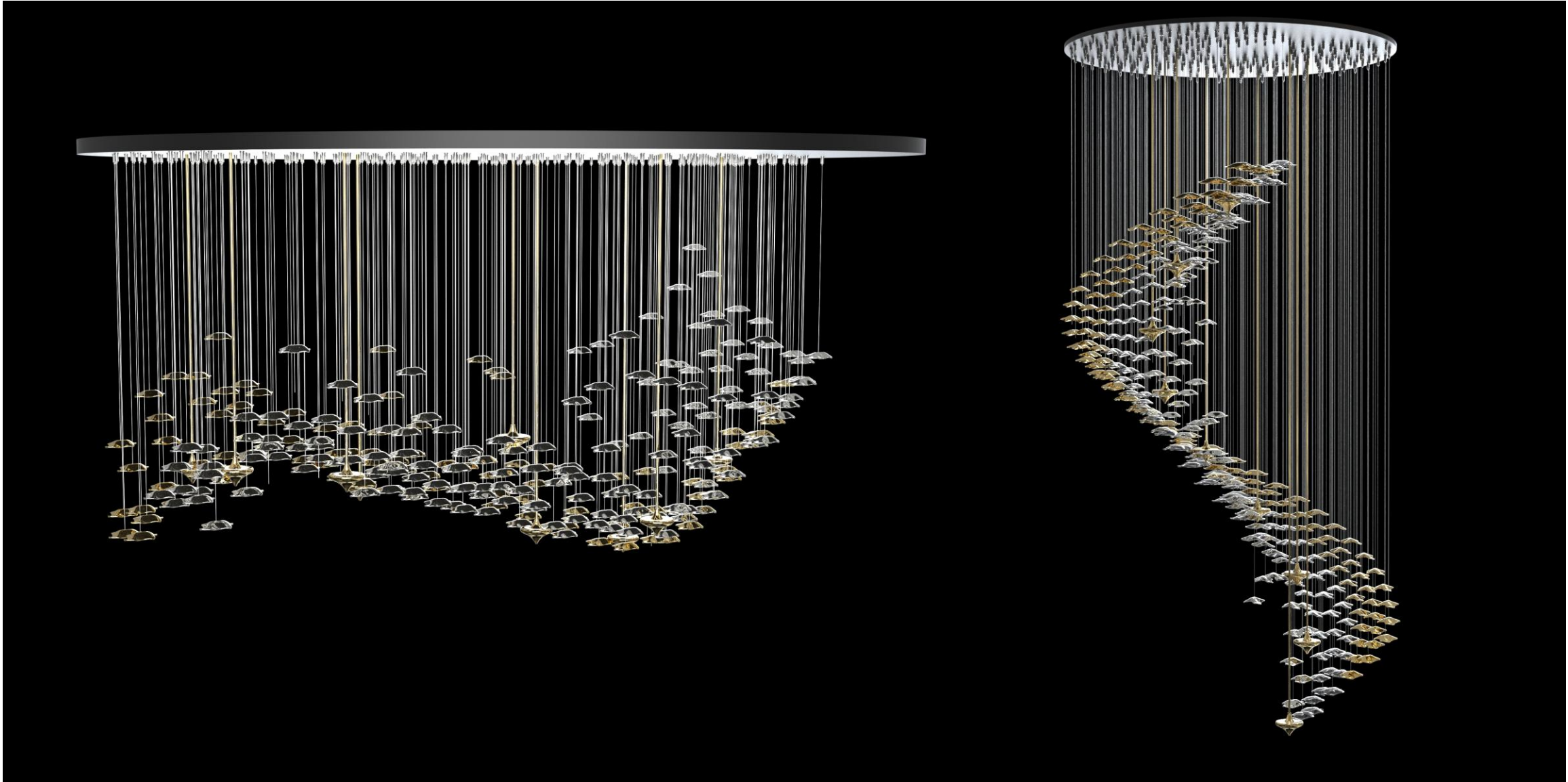
# CATALOG PRODUCT

## ELEMENTS

A modular lighting system featuring curated glass forms that appear to float, subtly illuminated by integrated indirect lighting. Scalable from intimate arrangements to grand installations, Elements offers tailored solutions for a range of architectural environments.

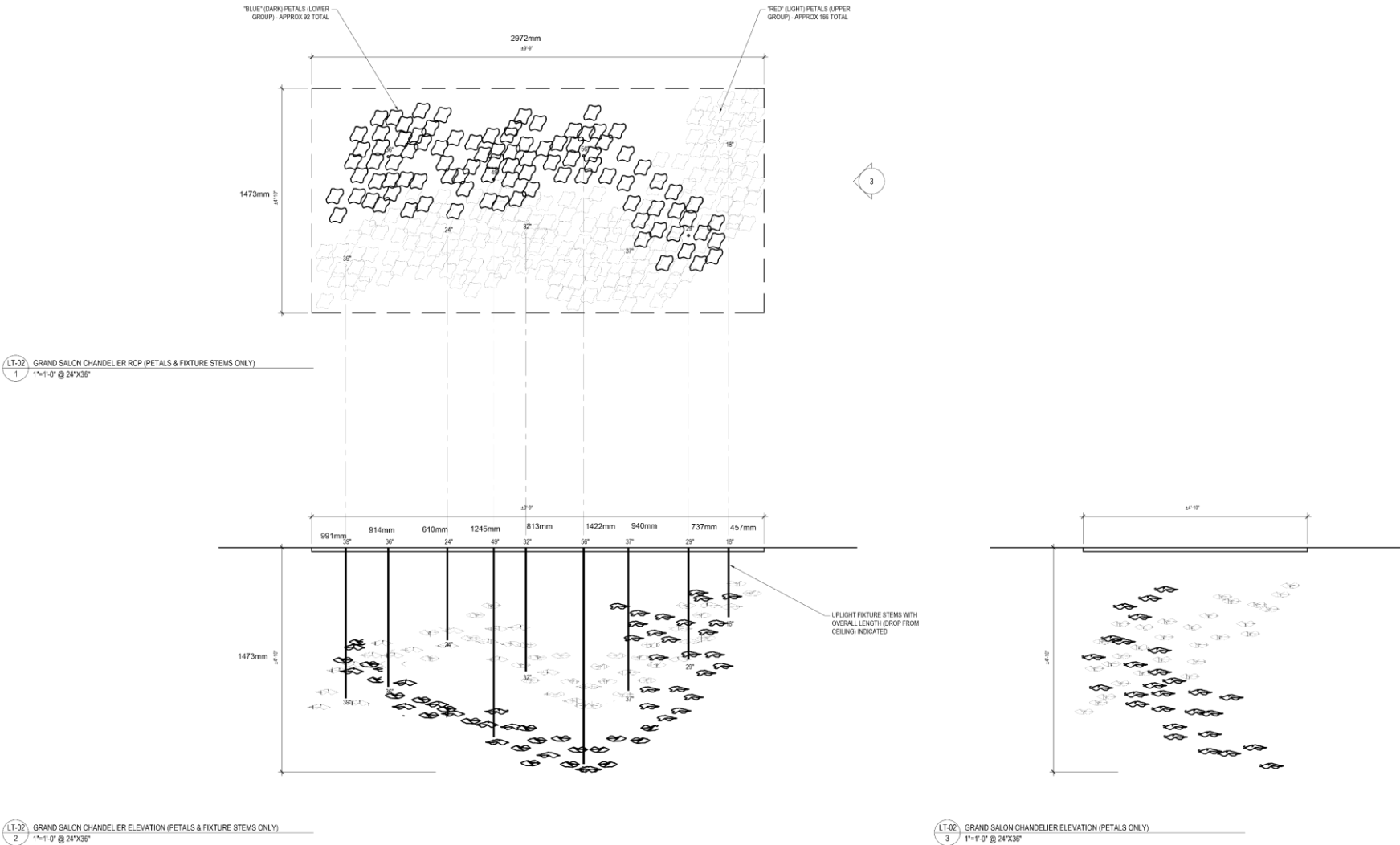




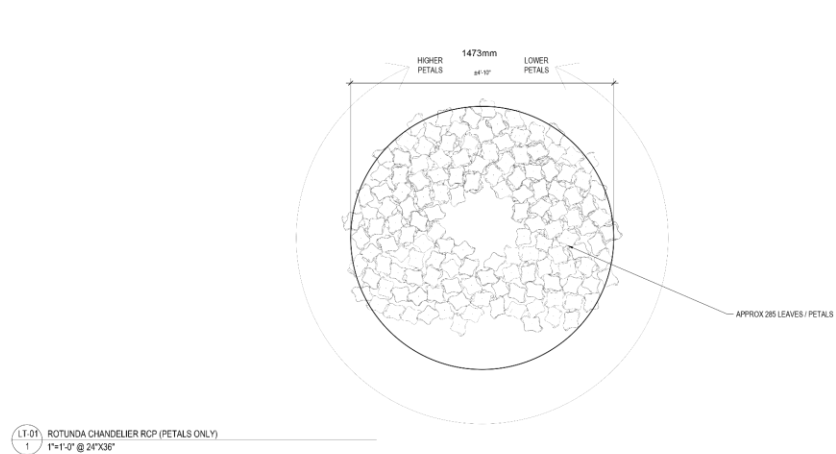


ELEMENTS Modular System

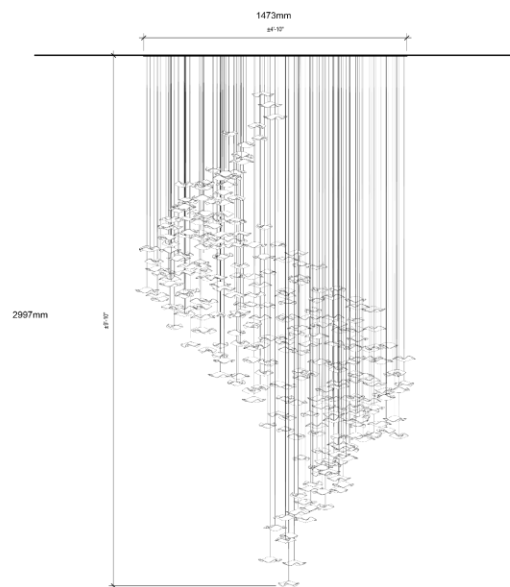
THE UPLIGHTS NEED TO BE MARKED WITH FIXTURE TYPE LT-02 AND LENGHTS  
EXAMPLE:  
LT-02-(1473MM - 58")



## ELEMENTS Modular System

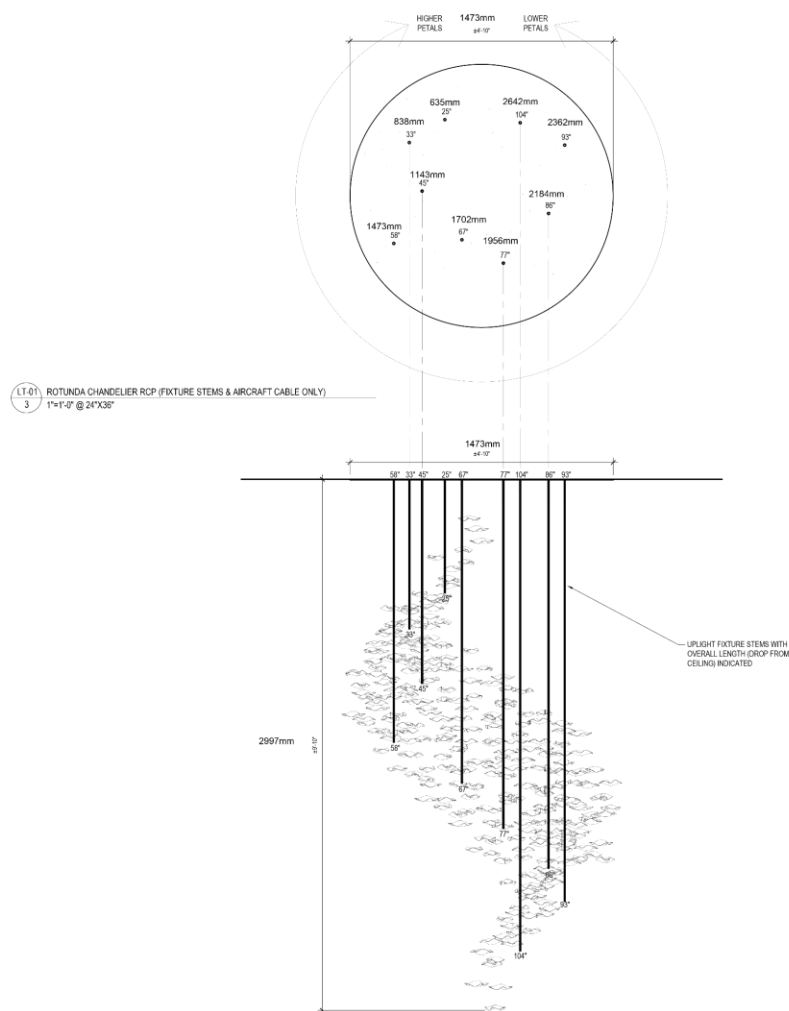


LT-01	ROTUNDA CHANDELIER RCP (PETALS ONLY)
1	1"=1'-0" @ 24"X36"



LT-01	ROTUNDA CHANDELIER ELEVATION (PETALS & AIRCRAFT CABLE ONLY)
2	1"=1'-0" @ 24"X36"

THE UPLIGHTS NEED TO BE MARKED WITH FIXTURE TYPE LT-01 AND LENGHTS  
EXAMPLE:  
LT-01-(1473MM - 58")



LT-01 ROTUNDA CHANDELIER RCP (FIXTURE STEMS & AIRCRAFT CABLE ONLY)  
3 1"=1'-0" @ 24"X36"

LT-01 ROTUNDA CHANDELIER ELEVATION (PETALS & FIXTURE STEMS ONLY)  
4 1"=1'-0" @ 24"X36"





## SHAPES - Form 360

Form 360 is a versatile family of low-profile circular luminaires available as suspension or surface mount. With multiple diameters, depths, 4 standard finishes and custom RAL colors, and control options, the collection delivers uniform, flicker-free illumination ideal for commercial, hospitality, and architectural environments. Its flexible specification options make it easy to integrate Form 360 into a wide range of ceiling conditions and design intents.



## SHAPES – Circle and Linear Pendants

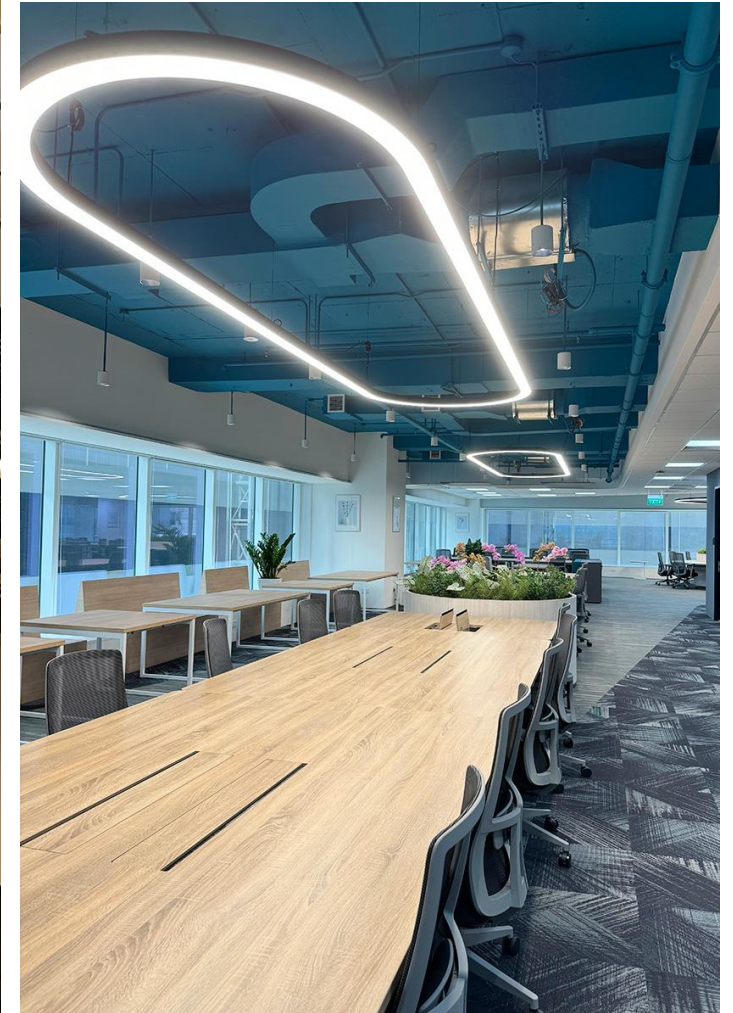
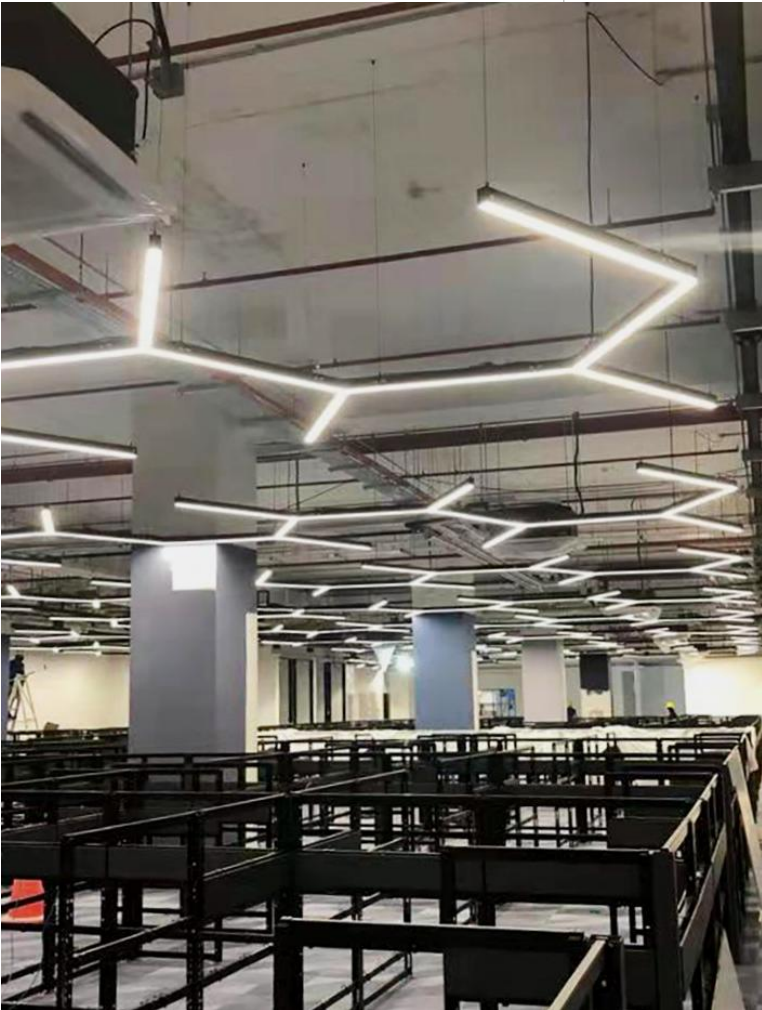
A modular lighting system built from essential geometries — circle and line — engineered for flexibility, precision, and visual comfort. Linear and Circular fixtures combine clean profiles, diffused optics, and scalable dimensions to suit projects from continuous runs to sculptural installations.





## SHAPES - Linear Connectors

Available in fourteen precise angle combinations, Linear Connectors link pendants and Circular Connectors to create seamless transitions, intersections, and directional changes within a composition.





## SHAPES – Circular Connectors

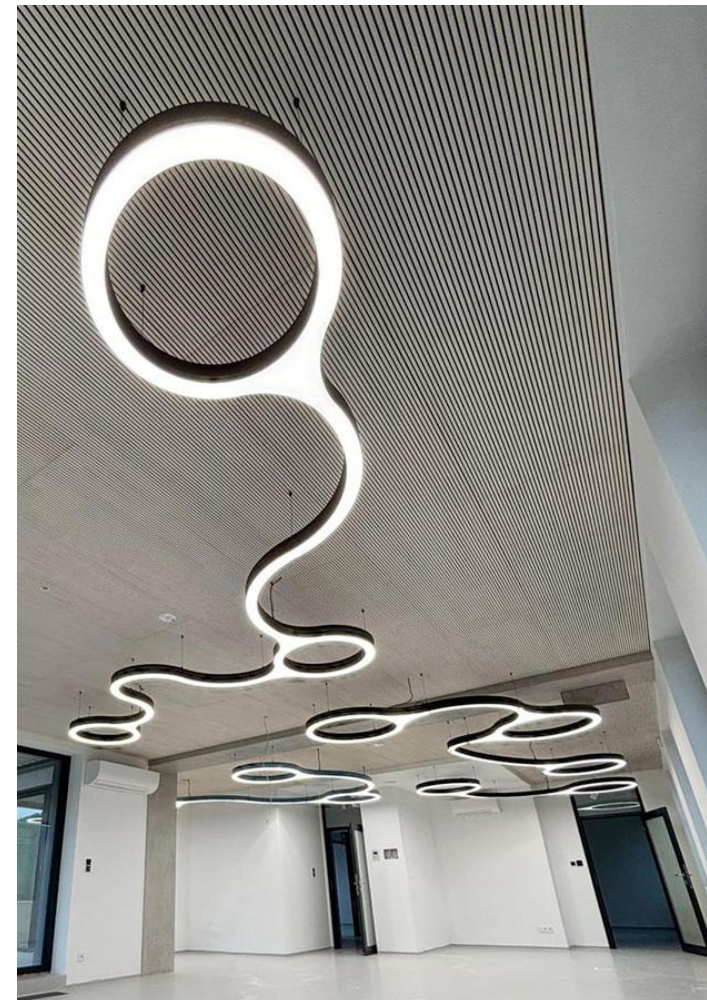
Offered in nine diameters, Circular Connectors join Linear Pendants and Connectors to form rings, arcs, and complex geometric arrangements — enabling continuous, uniform illumination across any configuration.





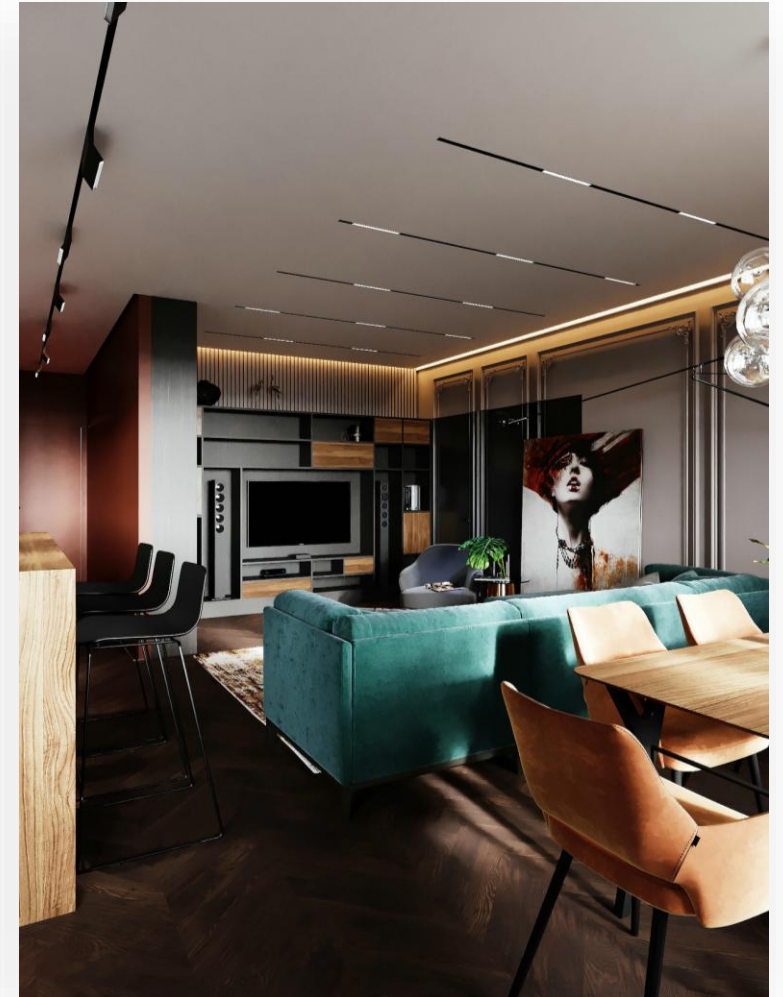
## SHAPES

A modular system where circles and lines combine without limits — connecting geometry, light, and architecture into a single expressive language.



## MAGS – Magnetic Track

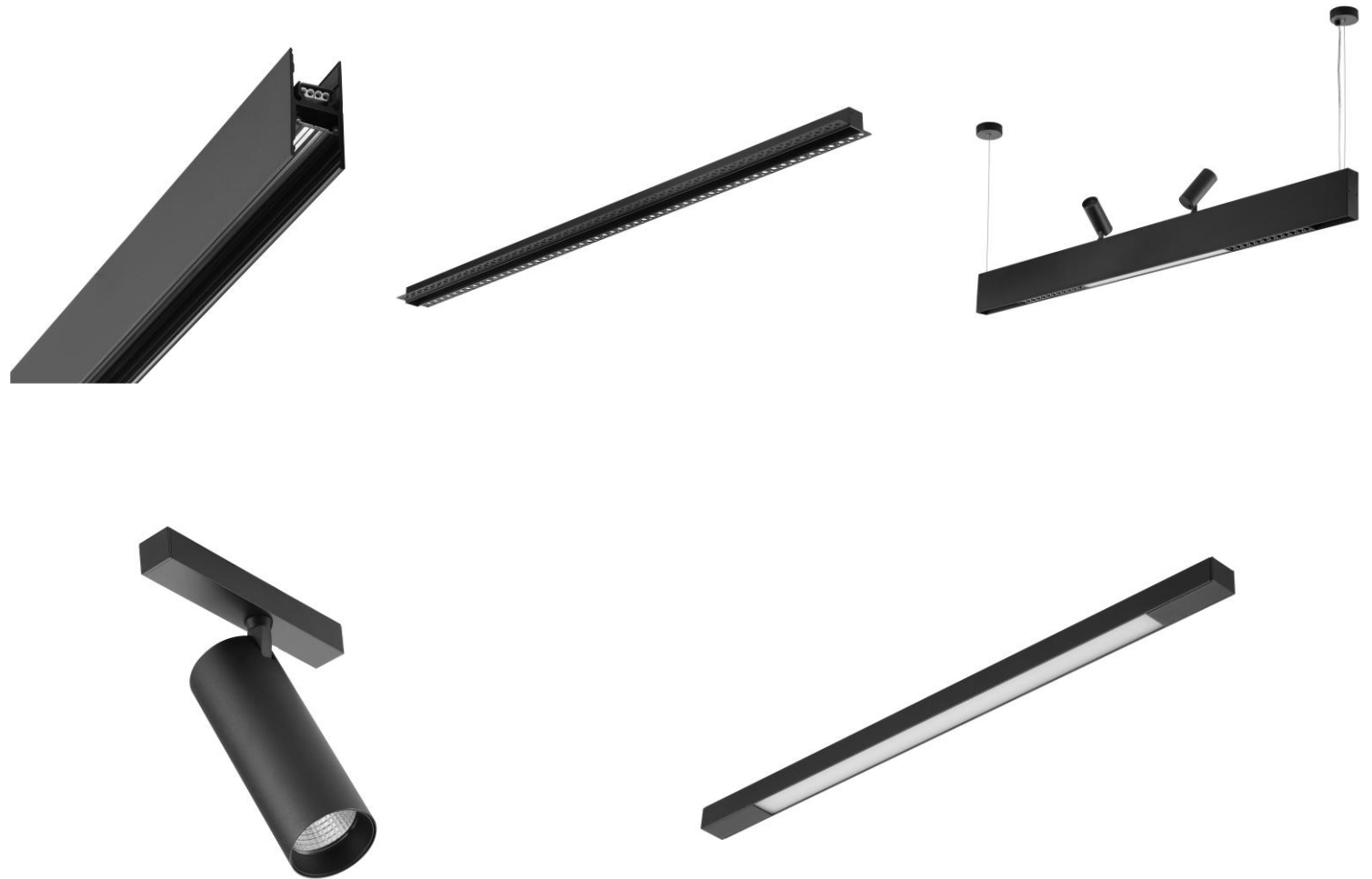
Seamless, versatile, functional, aesthetic, magnetic track system for recessed, surface mount, and suspended applications. Offered in linear or circular forms in two widths - regular and mini.





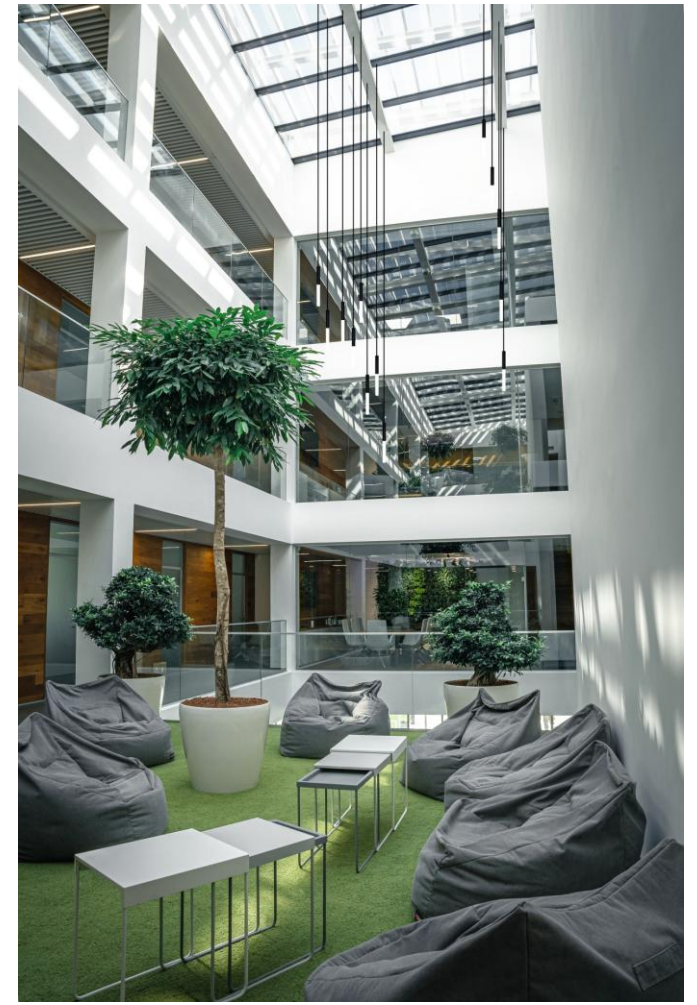
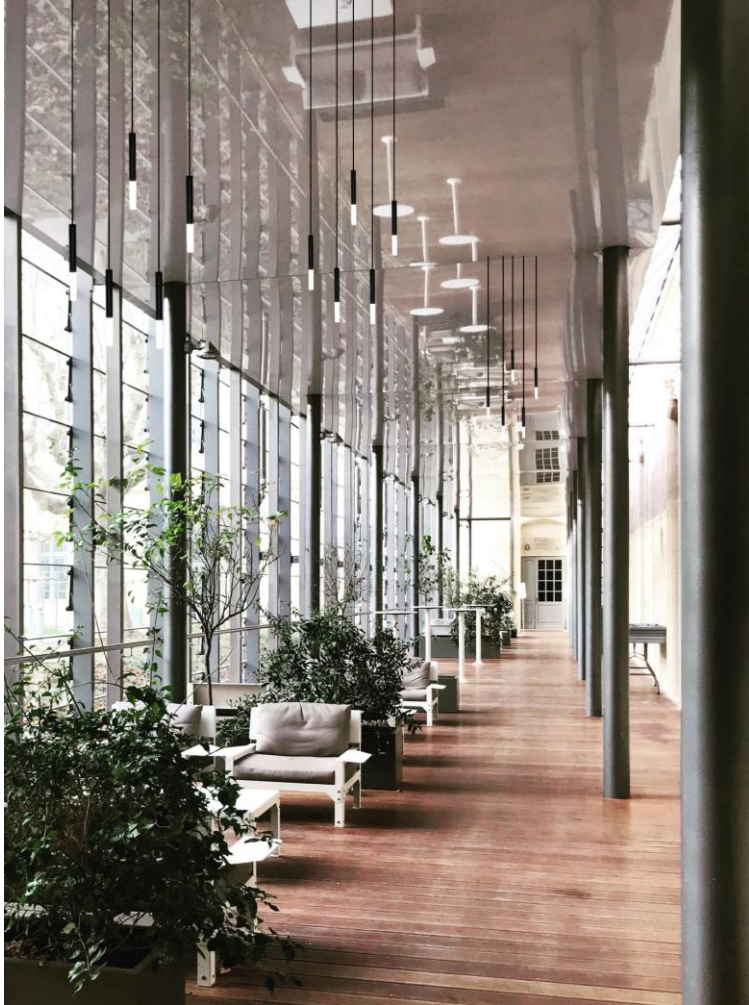
## MAGS MINI– Magnetic Track

Low-profile version of MAGS track. Less than 1.1" square for surface and recessed model. Pendant models also offer Up-Down versions



## DECO – Pendants

Deco Series Pendants offer a modern design aesthetic with excellent lighting performance and sleek styling. Use DECO for your highest-profile hospitality, lobby, café, and circulation areas along with any other space that can utilize a strong vertical linear lighting presence.



## CUSTOM

Luxformae offers unparalleled custom services. Using metal, glass, fabric, acrylic, leather, and more, Luxformae can create grand-scale statement pieces, art installations, systems, and custom-production project-specific fixtures. We can produce in any design style, from traditional to modern. We provide renderings and finish samples during the process.

All lighting fixtures are listed as UL/ETL before leaving the factory.





## Light Box

## Light Box

Light Box is a limitless opportunity to design with light.

Using fabric, acrylic or glass diffusing medium, Light Box allows the bespoke creation of illuminated geometric shapes in small – to large-scale sizes. These shapes can be used as elements of architectural embellishment or as stand-alone functional surfaces such as counters, desks, and displays.



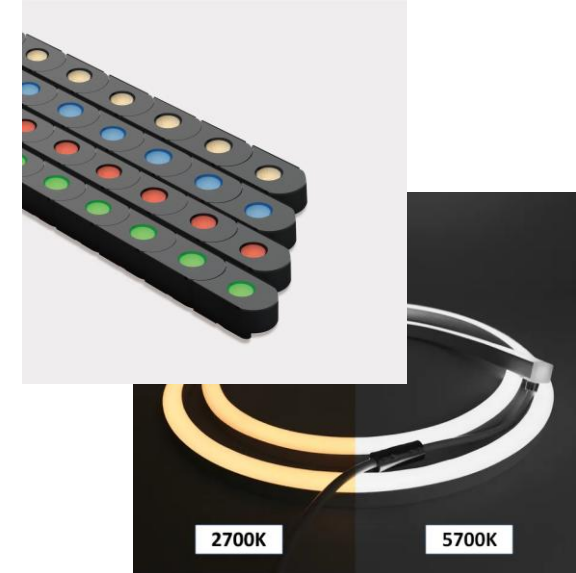
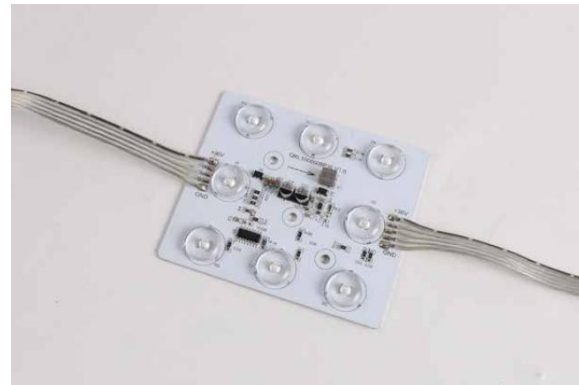
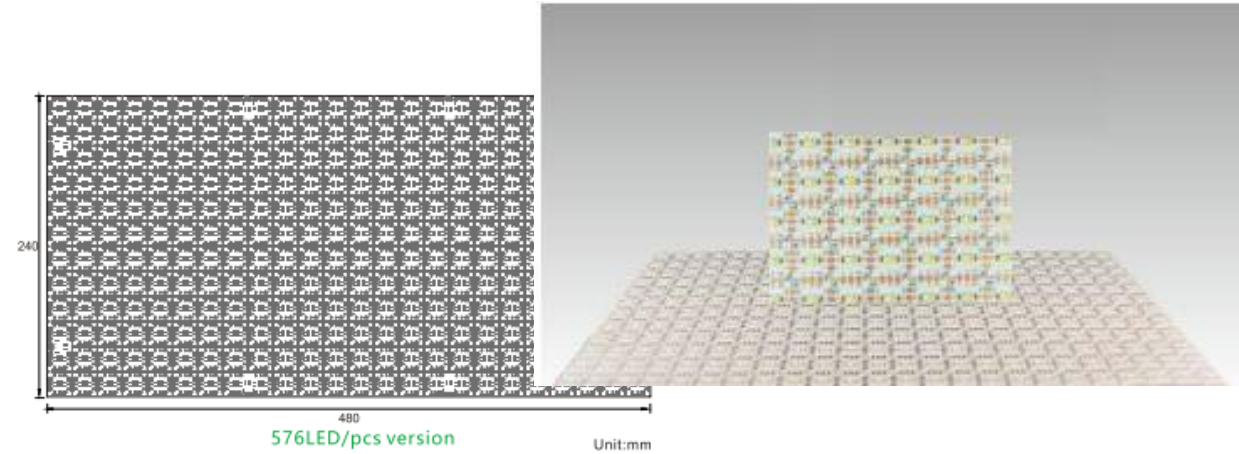
## Light Box

For our Light Box we use several lighting options:

- Led Mesh (up to 576 led every 1.25sqft)
- Led Module (single CCT, Tunable White, RGBW, RGBWW)
- Led Point
- Led Neon/Flex
- Led Pixel

Dry, Damp or Wet Location.

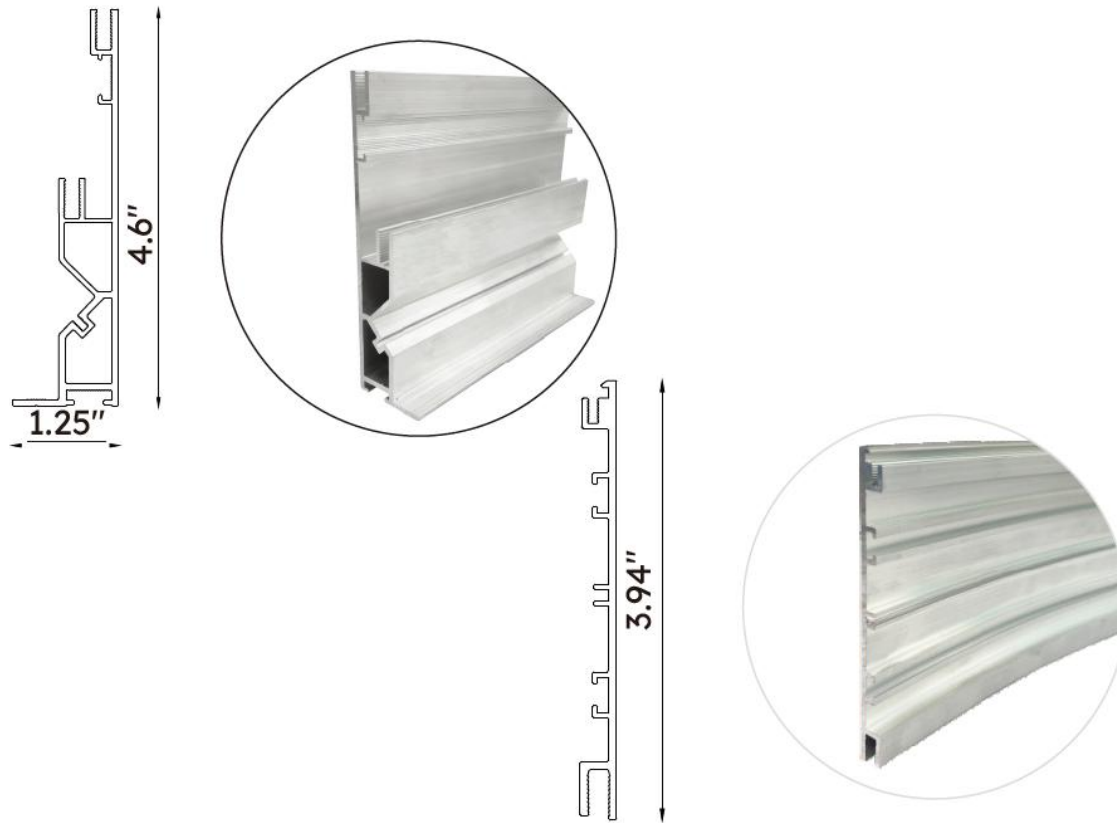
Enclosed in Acrylic panels, Glass or Fabric, with frame or without



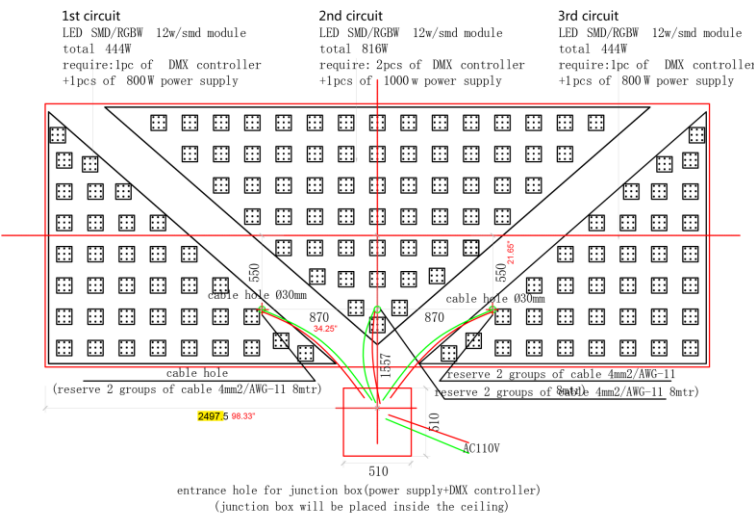


## Light Box

Made from extruded aluminum profiles, fire-resistant diffusers, and high-quality LEDs, the Light Box combines form and function. Profiles can be straight or curved and support integrated bug screens, with seamless fabric widths up to 12 feet and lengths up to 50 feet — adapting effortlessly to any architectural space.



Light Box



Light source layout





## Chandeliers | Pendants

Custom – Bespoke Signature Chandelier





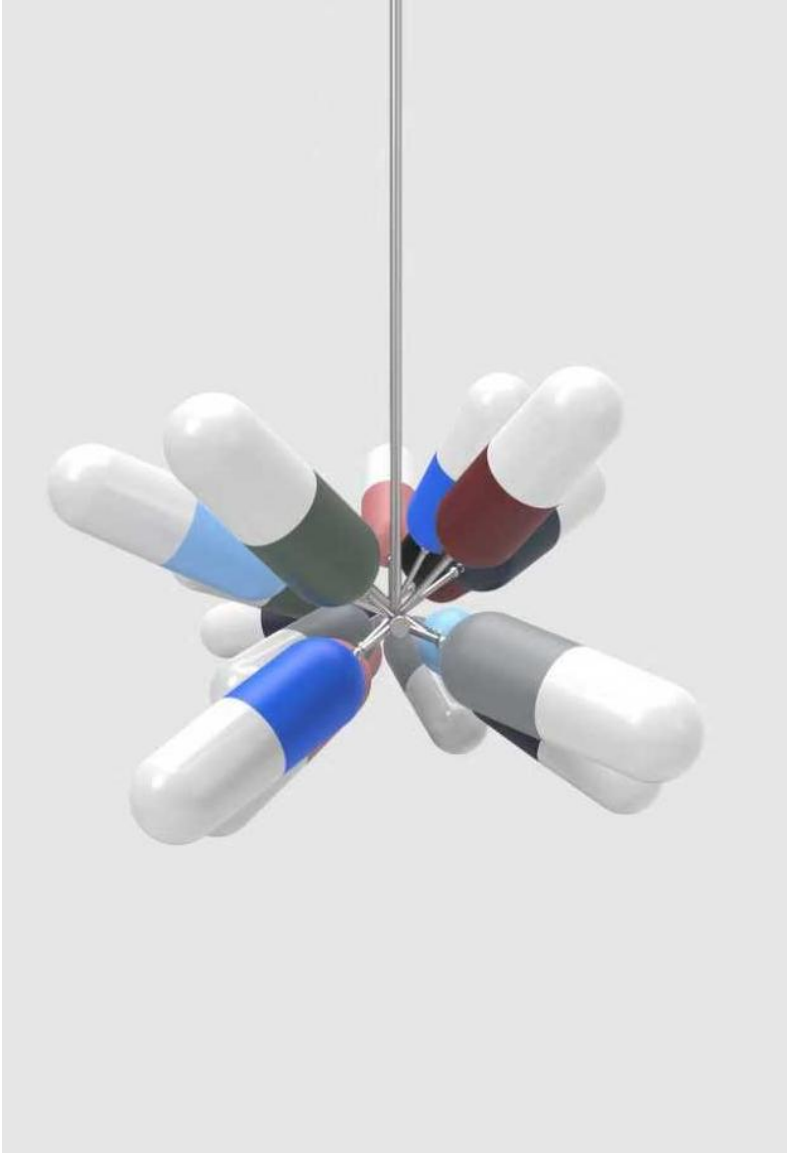
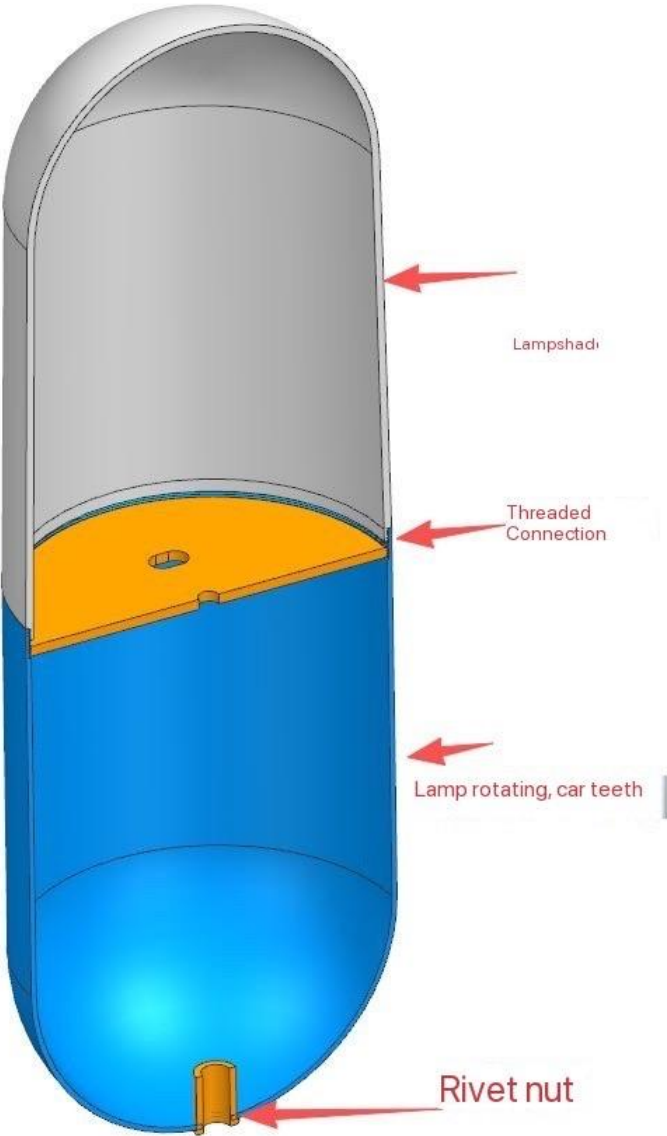
Custom – Bespoke Signature Chandelier



**Core Scrub Colors**

5004	5011	7000			
6006	5005	3014	3005	5024	5011

Custom - Bespoke Signature Chandelier



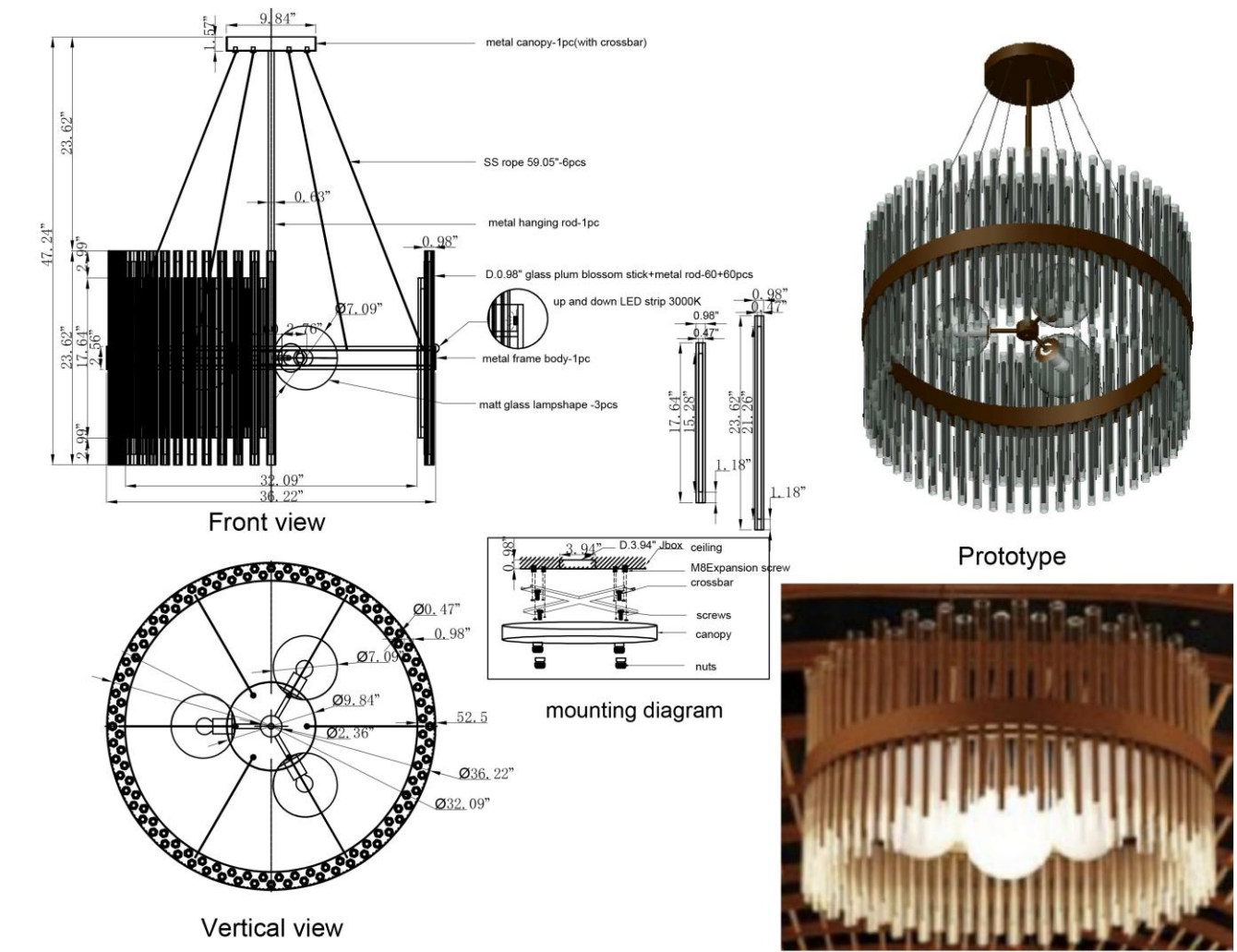


Custom - Bespoke Signature Chandelier



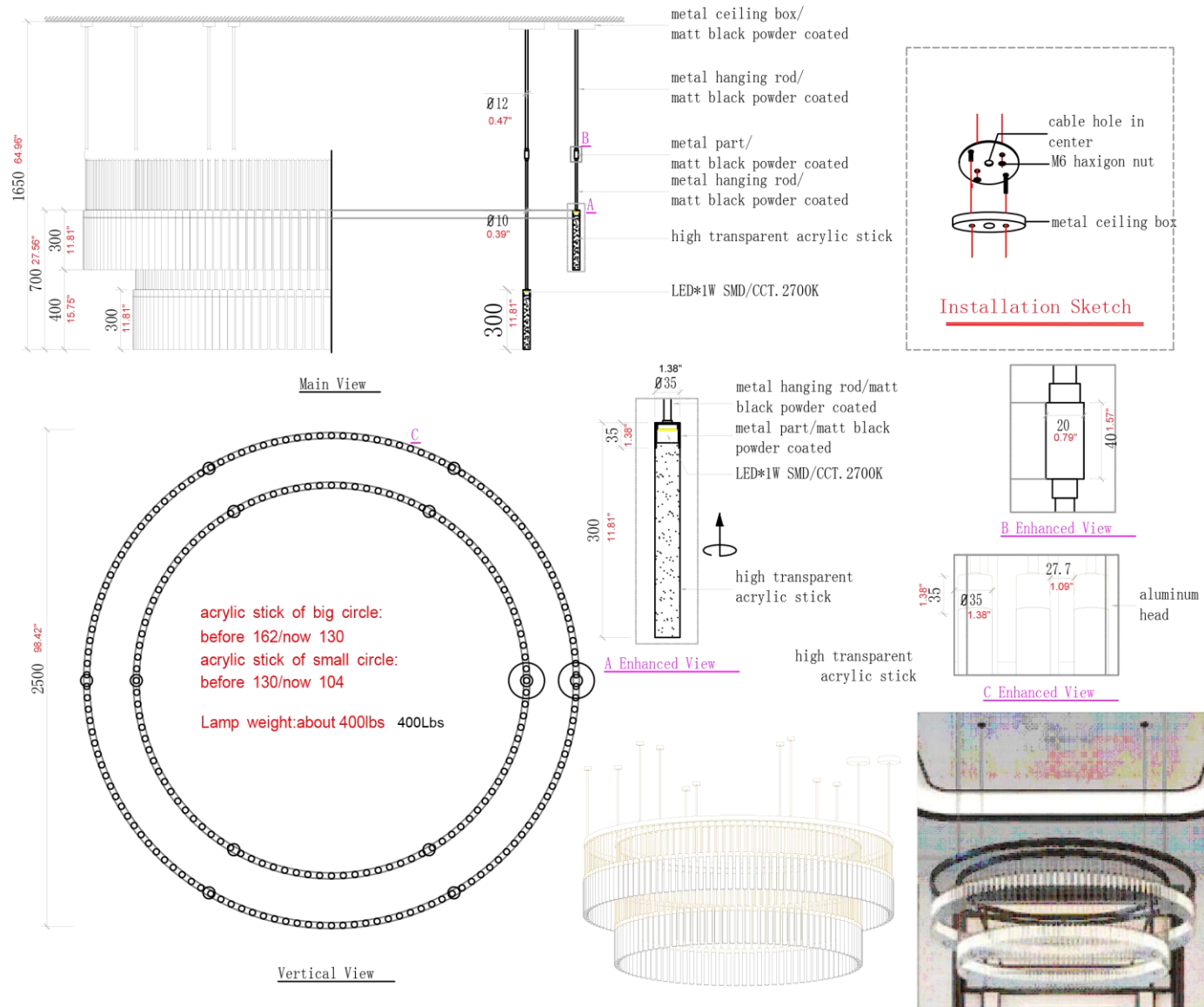


Custom - Chandelier





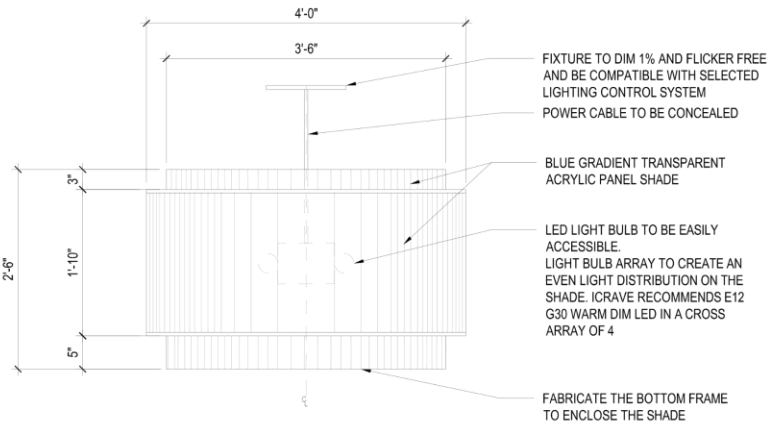
Custom - Chandelier



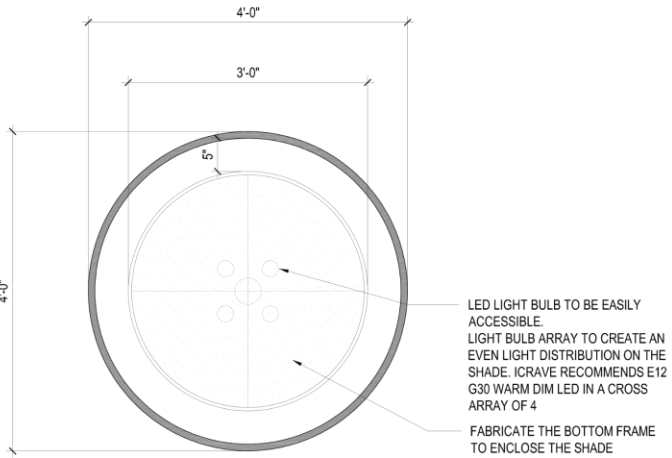
Custom - Pendants



NOTE  
BLUE GRADIENT LANTERN FABRIC



2 FRONT ELEVATION - PENDANT  
SCALE: 3/4"=1'-0"



1 PLAN - PENDANT  
SCALE: 3/4"=1'-0"

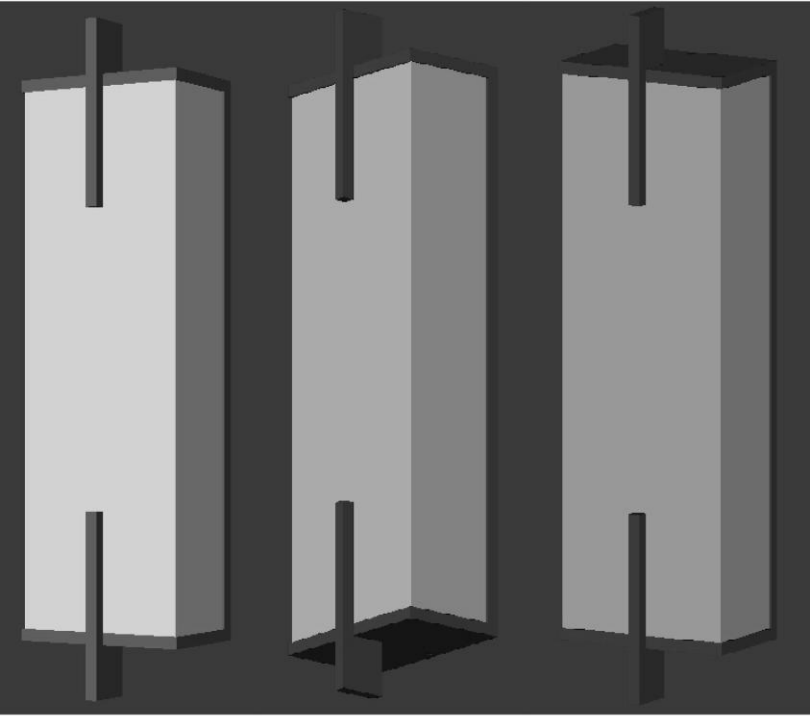
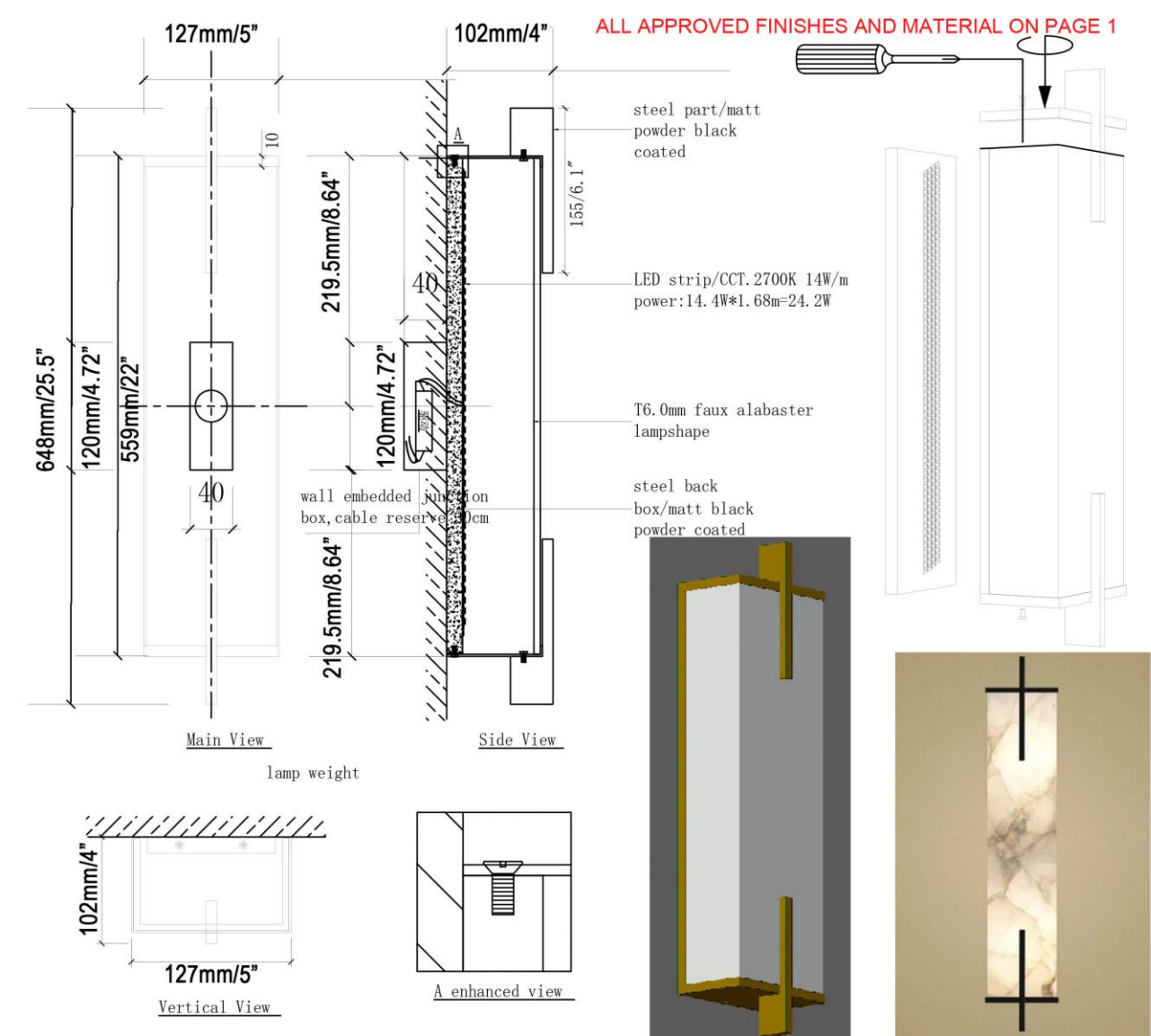
- NOTES:
1. CONSTRUCTION DETAILS ARE FOR DESIGN INTENT ONLY. FINAL CONSTRUCTION METHOD TO BE CONFIRMED BY FABRICATOR IN SHOP DRAWINGS (SHOP DRAWINGS, MOCK-UPS & FINISH SAMPLE TO BE SUBMITTED BY FABRICATOR & APPROVED BY DESIGNER). ALL MILLWORK & BUILT-IN DIMENSIONS TO BE FIELD VERIFIED.
  2. DIMENSIONS TO BE VERIFIED IN FIELD.
  3. QUANTITIES ARE APPROXIMATE AND TO BE CONFIRMED BY PURCHASING AGENT.
  4. RENDERINGS ARE FOR REFERENCE ONLY. FOR FINISHES, REFER TO DRAWINGS.



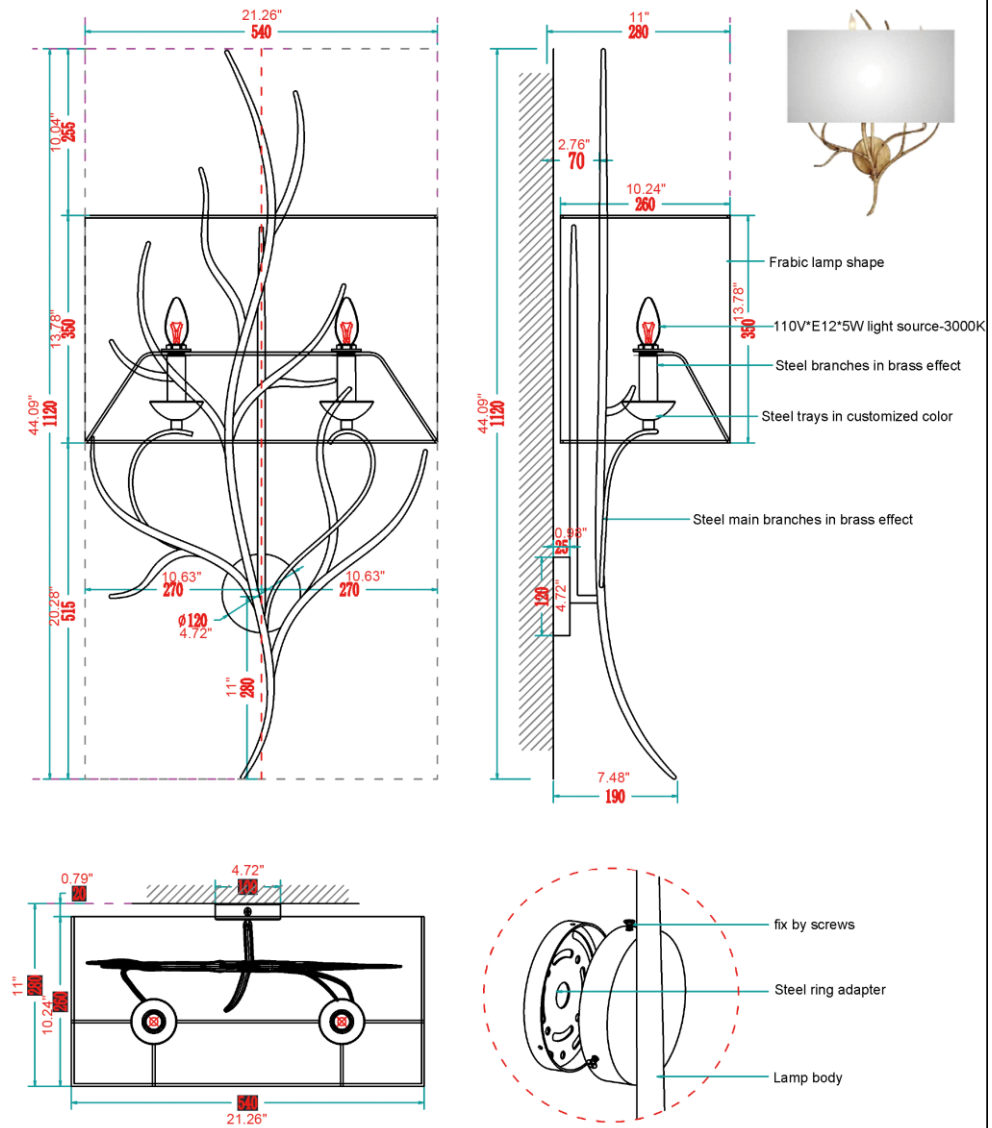


## Wall Scones

Custom - Wall



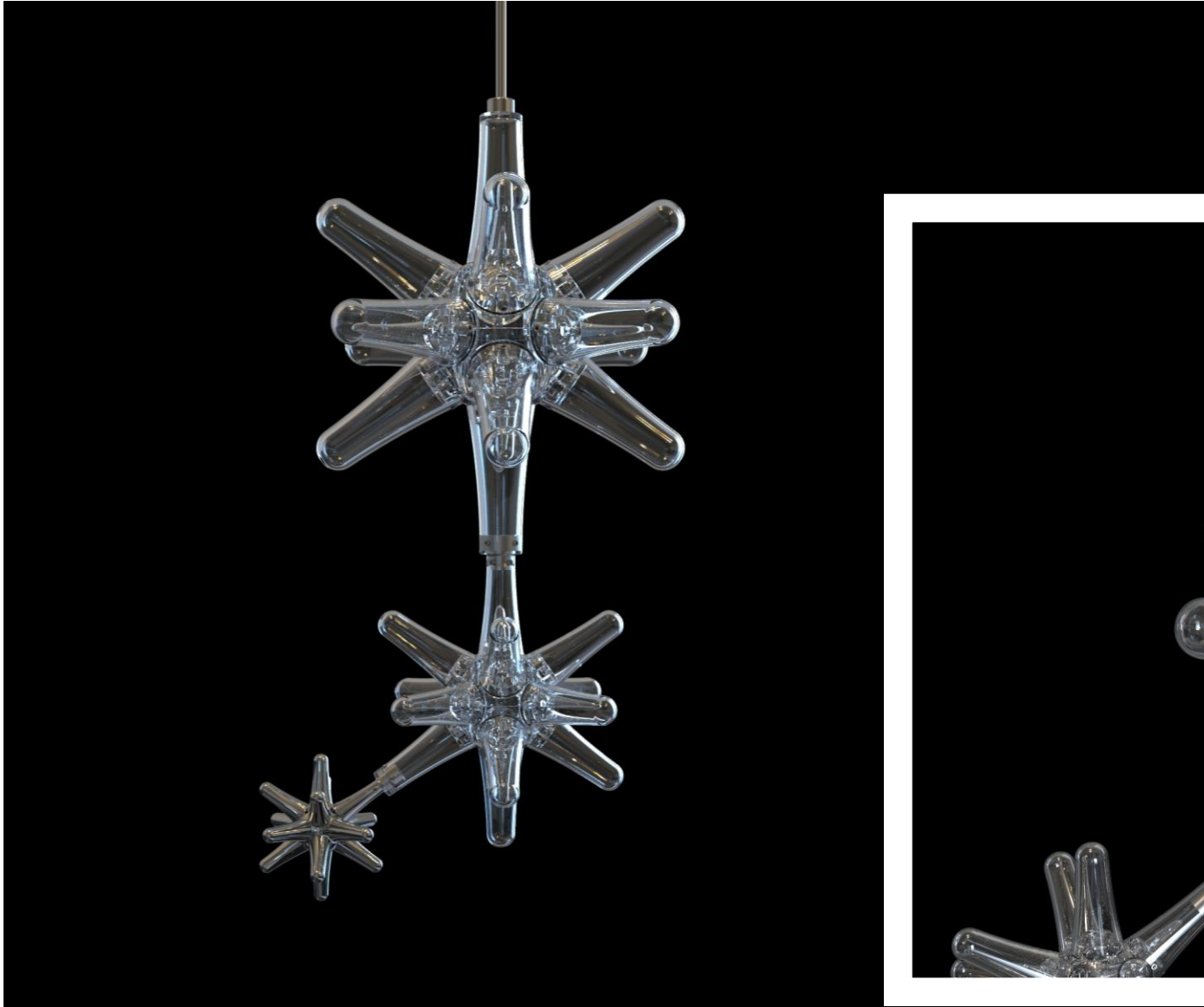
### Custom - Wall



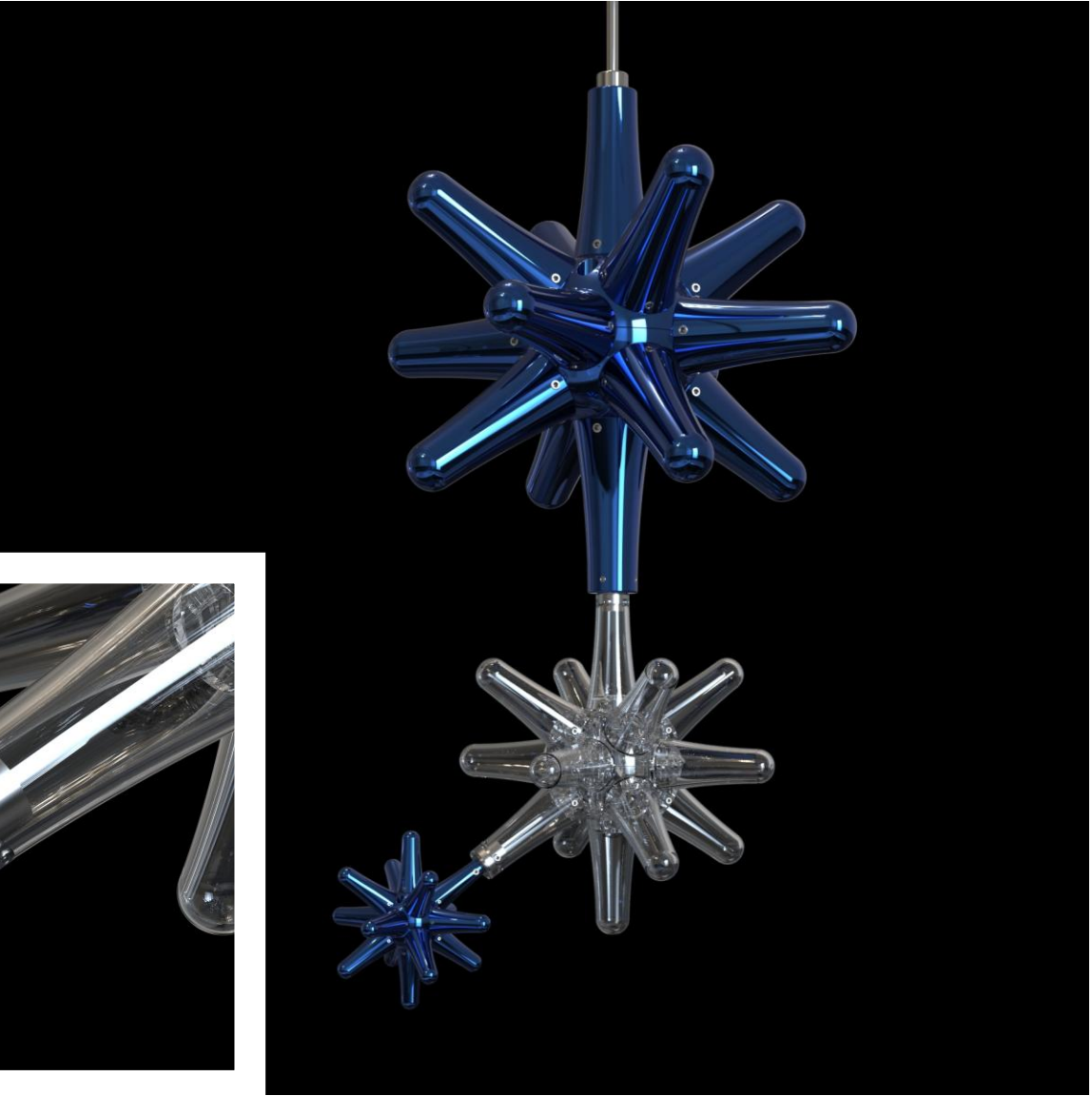


# Modular Systems

Star System

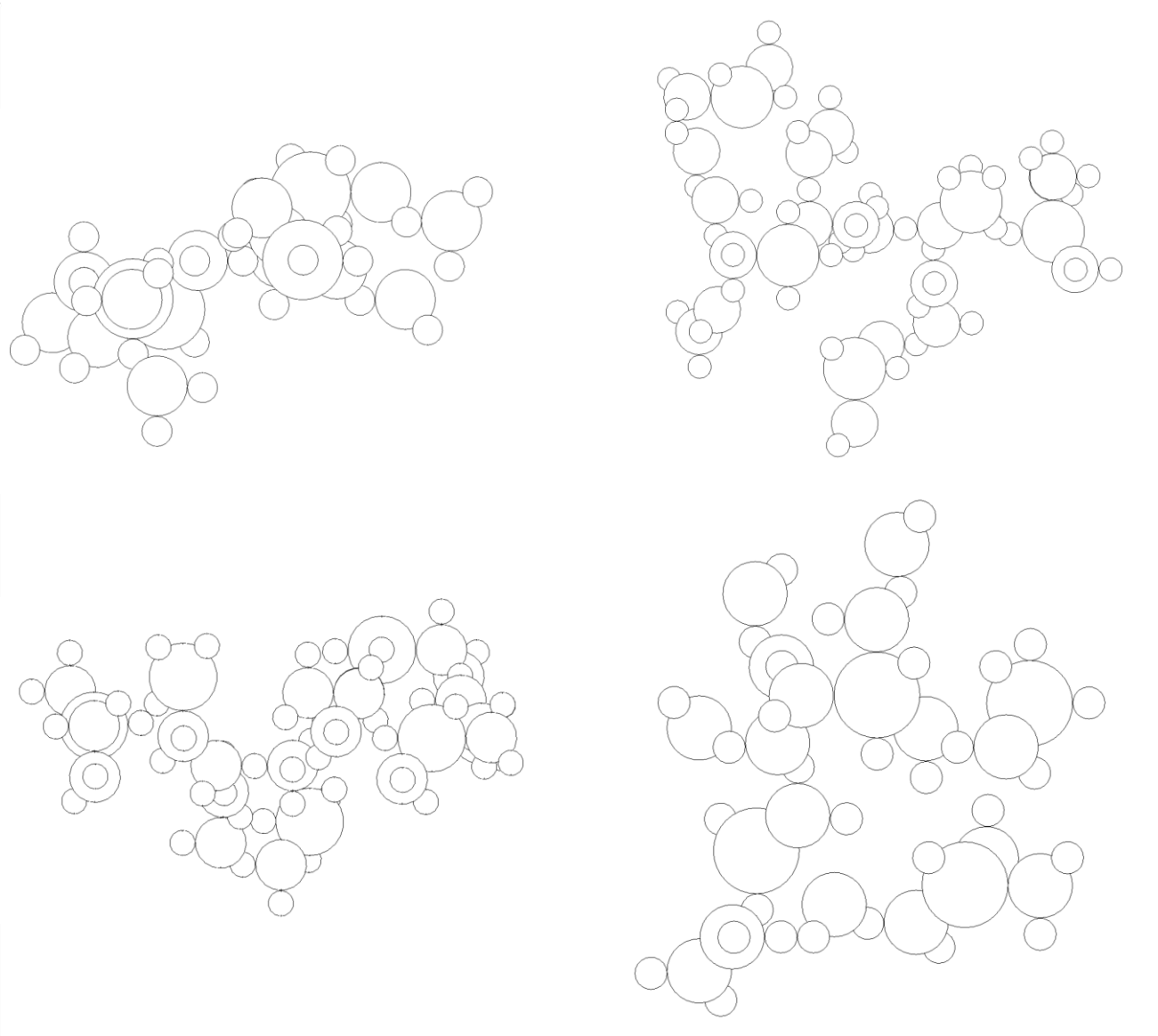
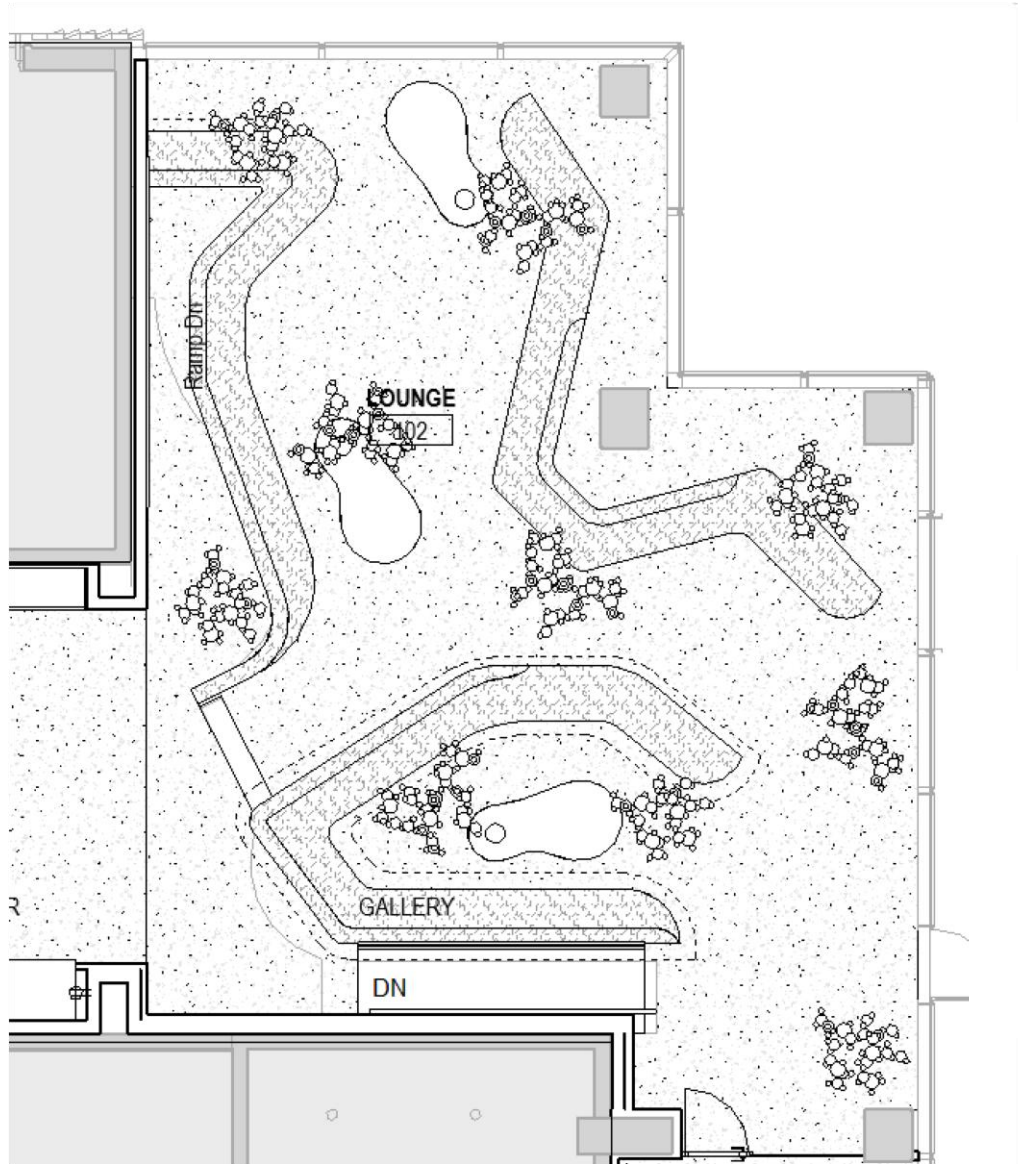


Modular System



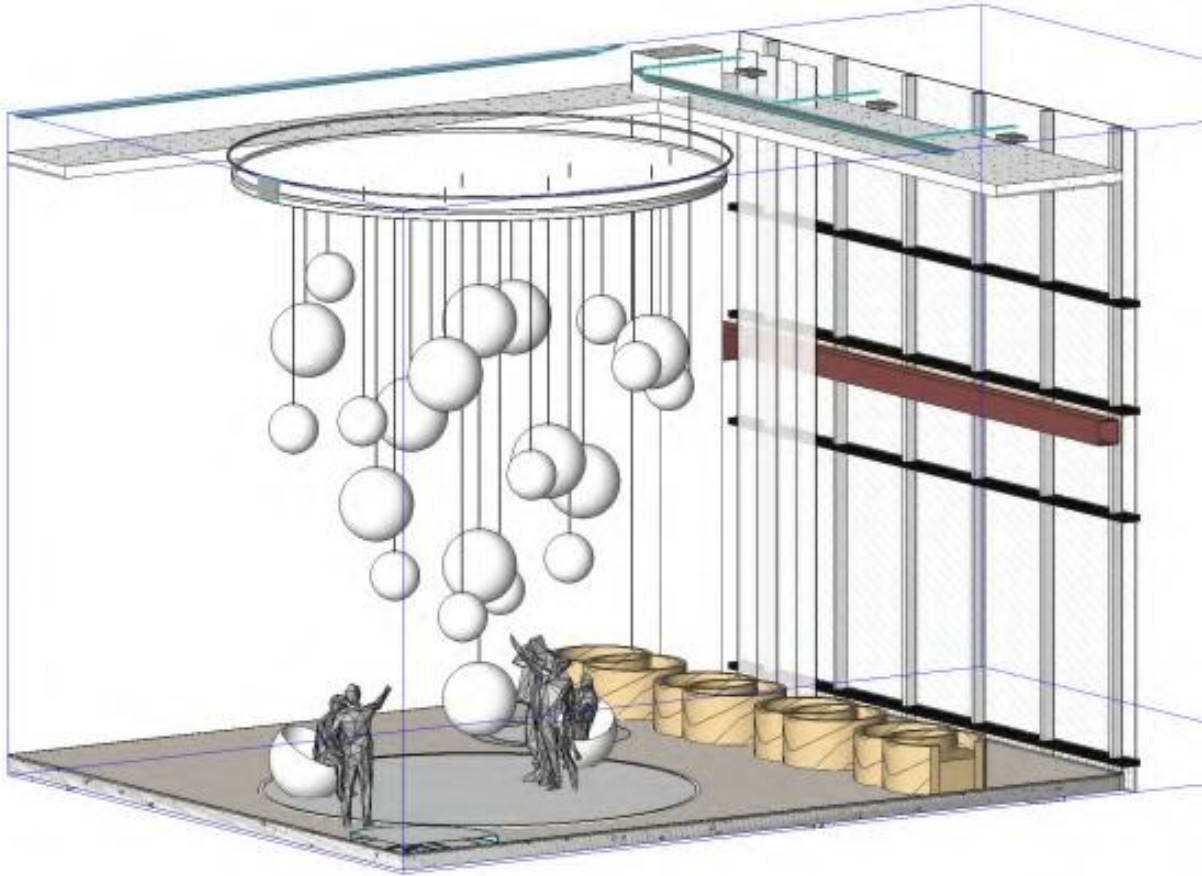


Modular System – Sample Layouts



## **Statement Installations**

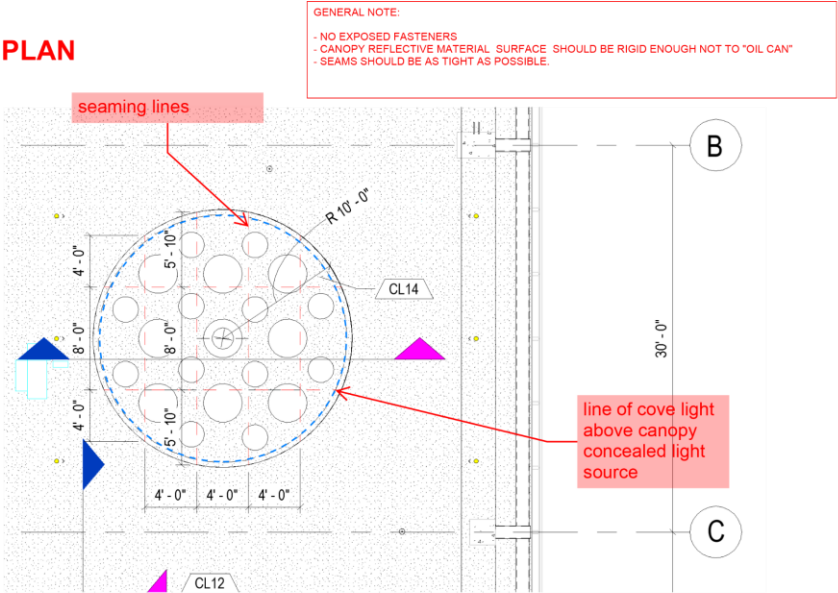
Statement Installations



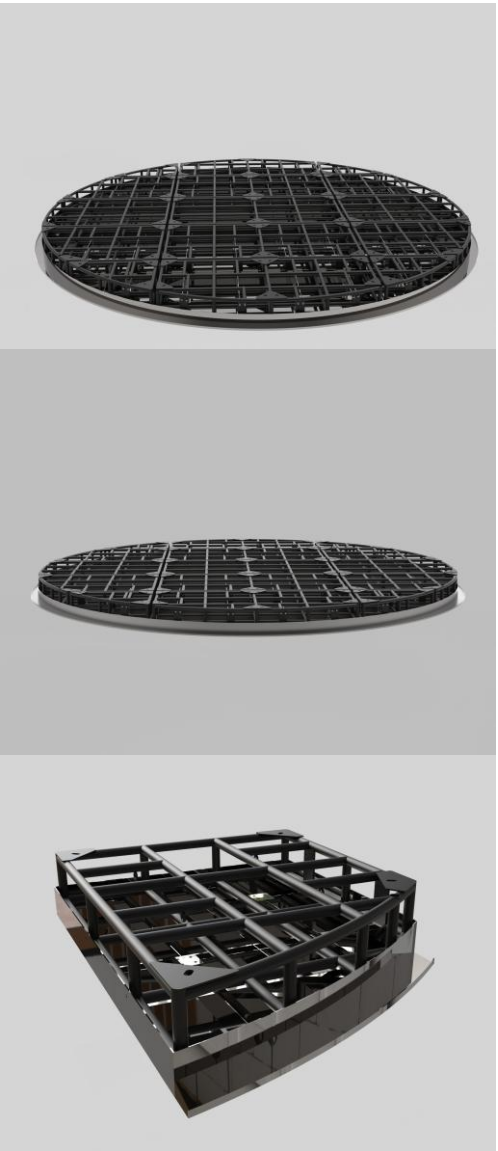
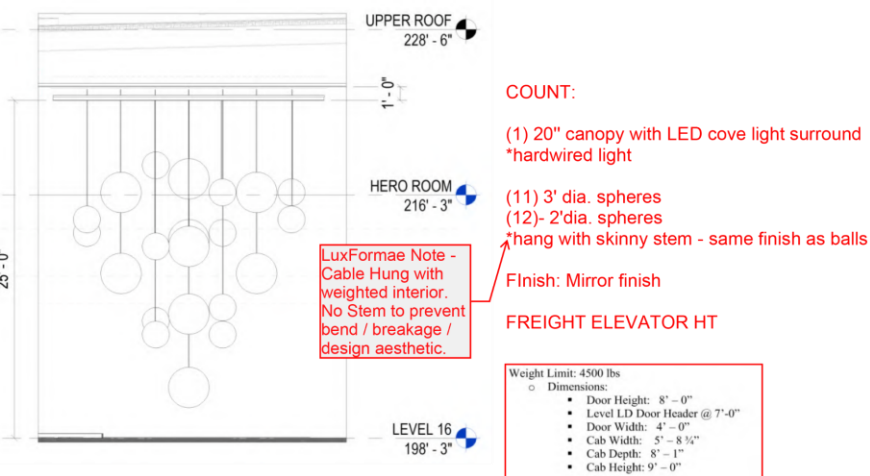


Statement Installations

PLAN



ELEVATION





Statement Installations





What is next?

- Pipe Modular System
- Gensler Designed Product

