

Light is an indispensable value and a characterizing element of architecture. Light has the power to change the environmental atmosphere and personal sensations in an instant.

At Luxformae, our mission is to integrate the ethereal immateriality of light to define architectural spaces blending enhanced design and ergonomics with unique style and excellent performance.

We pride ourselves on sourcing unique design solutions you can trust from the moment you discover our offerings.

Our best clients know that when they come to Luxformae, they can expect quality products that can be used beyond just the front of the house. They know they can send us concept renderings and images, and we will transform those ideas into reality by sourcing quality solutions. They know that if there is an issue, our team will work to reconcile concerns quickly and efficiently.

We pride ourselves on creating solutions you can trust from the moment you get in touch.

Through our uncompromising commitment to quality control and our expertise in risk assessments and technical details, you can rest assured that we have everything covered.

It's a tried and trusted approach that allows us to deliver exactly what you want, when you want, and at the right price.

We simply wouldn't have it any other way.



CUSTOM

Luxformae offers unparalleled custom services. Using metal, glass, fabric, acrylic, leather, and more, Luxformae can create grand-scale statement pieces, art installations, systems, and custom-production project-specific fixtures. We can produce in any design style, from traditional to modern. We provide renderings and finish samples during the process.

All lighting fixtures are listed as UL/ETL before leaving the factory.



Light Box

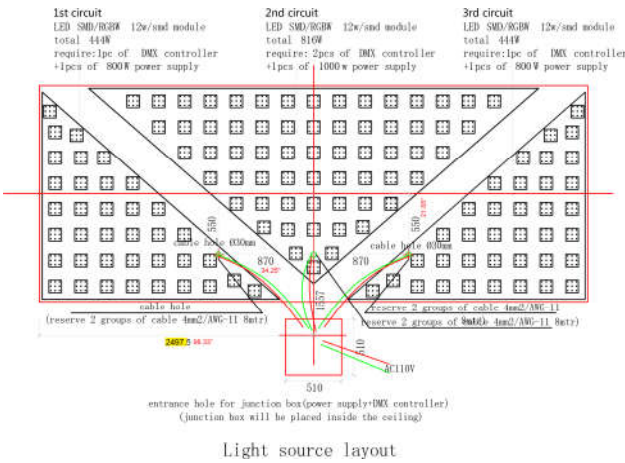
Light Box

Light Box is a limitless opportunity to design with light.

Using acrylic or glass diffusing medium, Light Box allows the bespoke creation of illuminated geometric shapes in small – to large-scale sizes. These shapes can be used as elements of architectural embellishment or as stand-alone functional surfaces such as counters, desks, and displays.



Light Box



Light Box



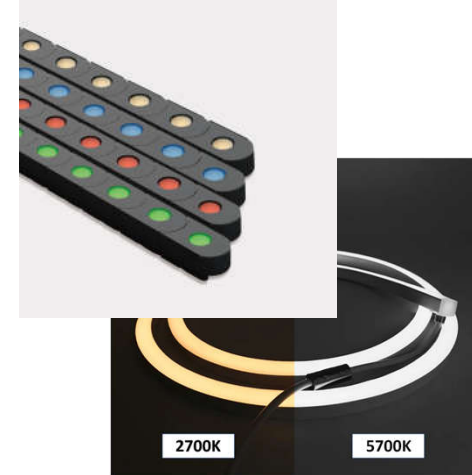
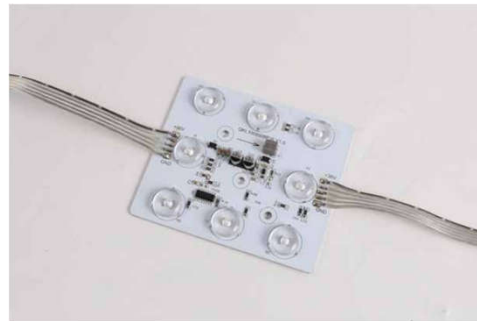
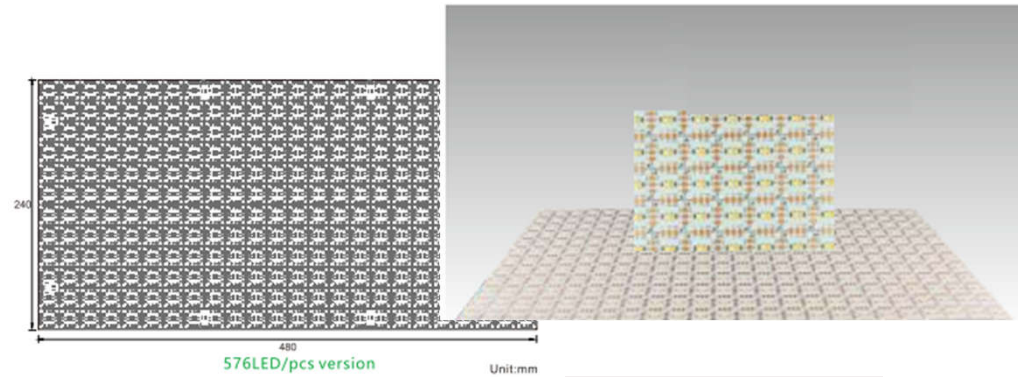
Light Box

For our Light Box we use several lighting options:

- Led Mesh (up to 576 led every 1.25sqft)
- Led Module (single CCT, Tunable White, RGBW, RGBWW)
- Led Point
- Led Neon/Flex
- Led Pixel

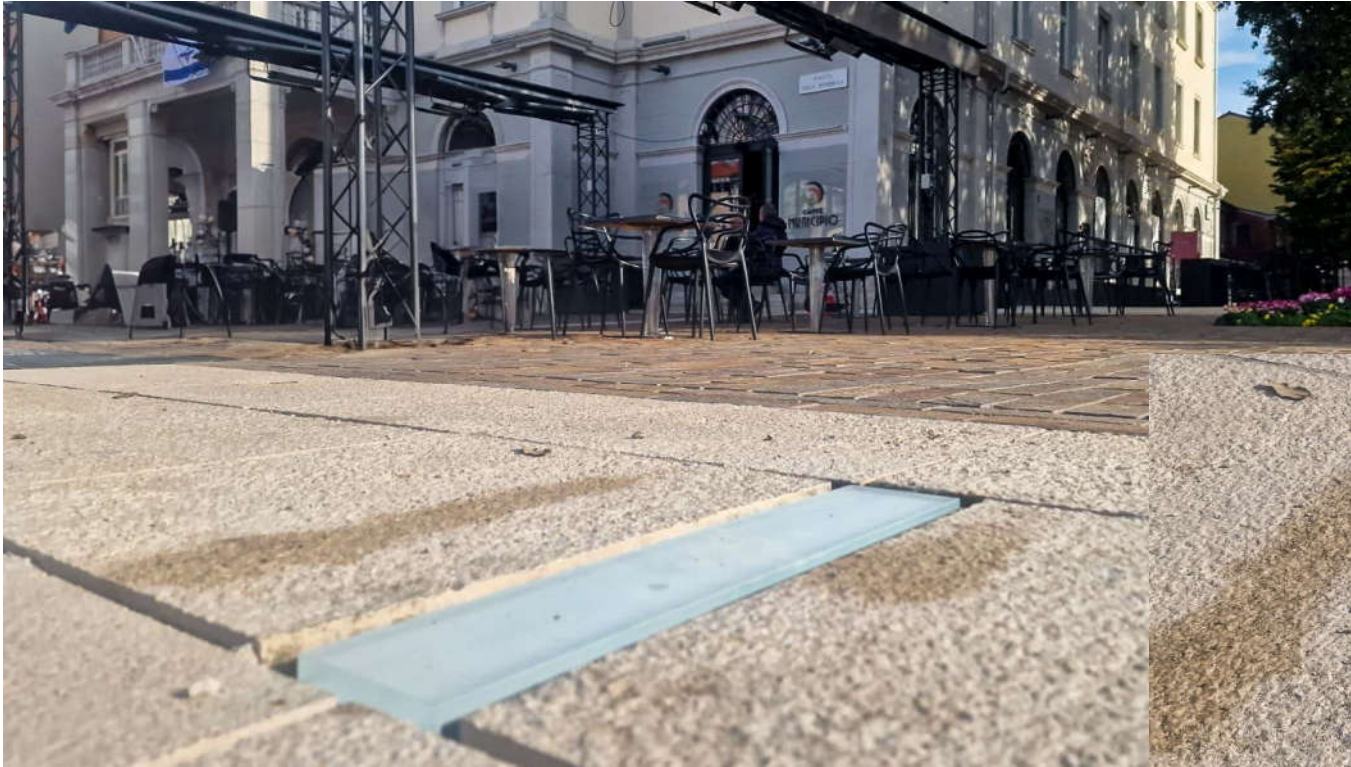
Dry, Damp or Wet Location.

Enclosed in Acrylic panels, Glass or Fabric, with frame or without



Pavers

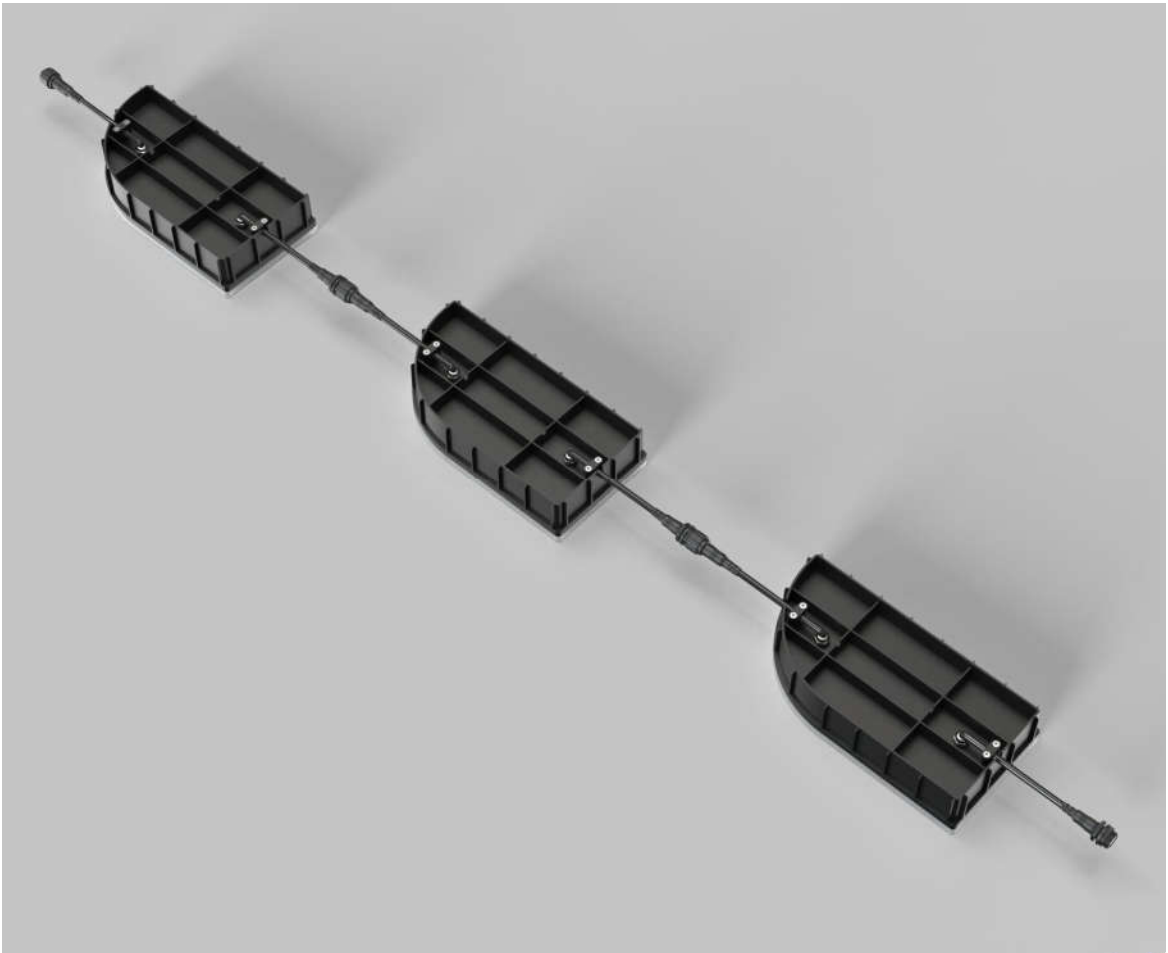
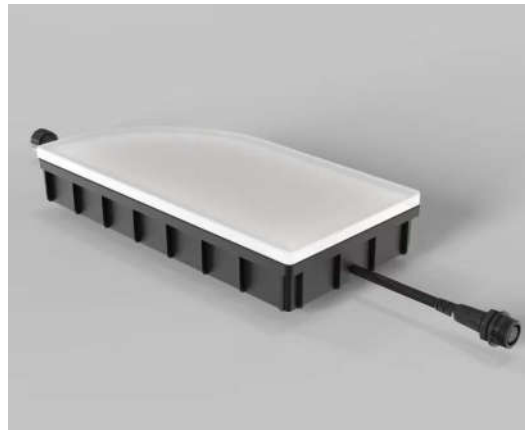
Pavers



Pavers

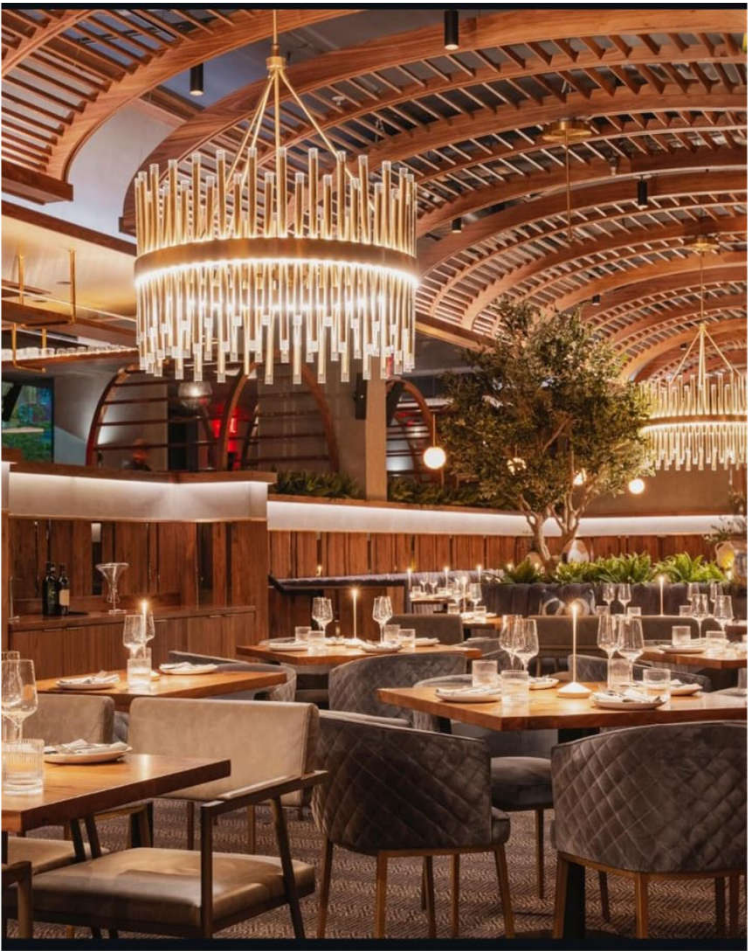
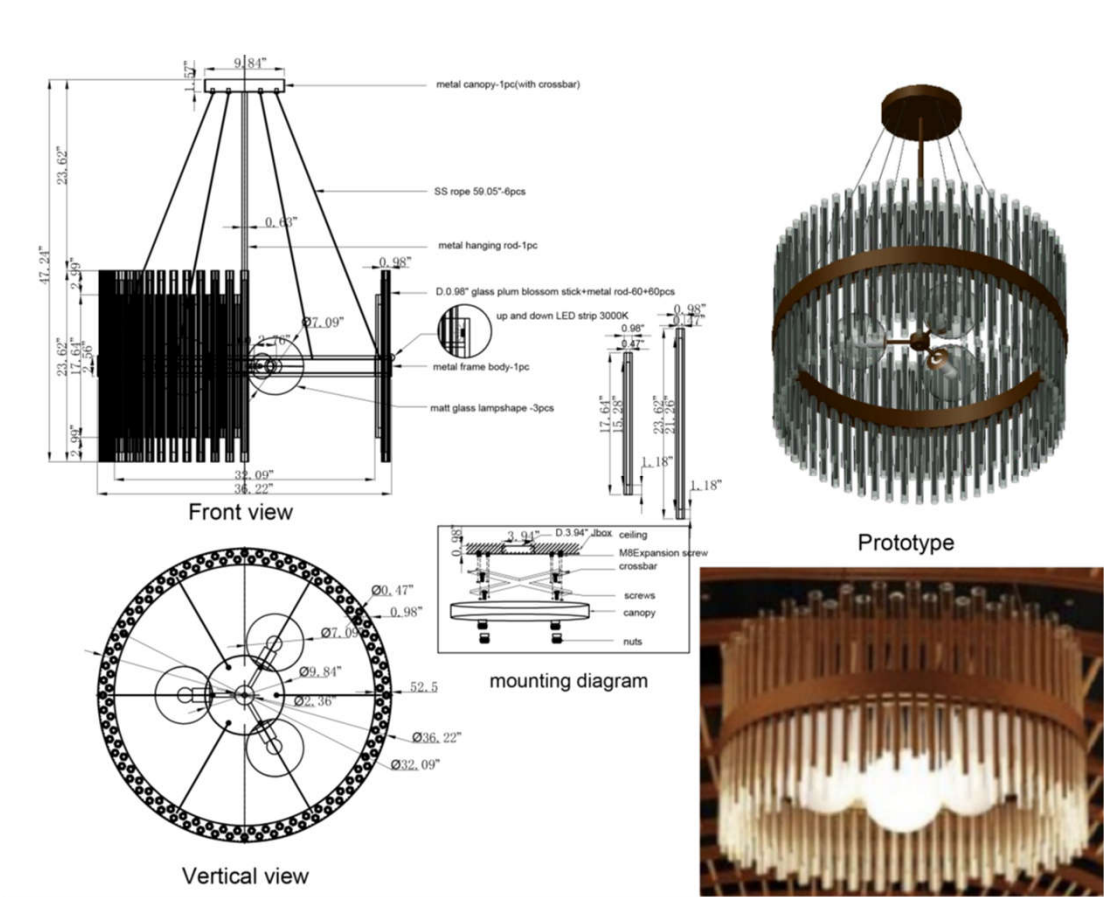


Pavers



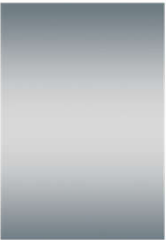
Chandeliers | Pendants

Custom - Chandelier

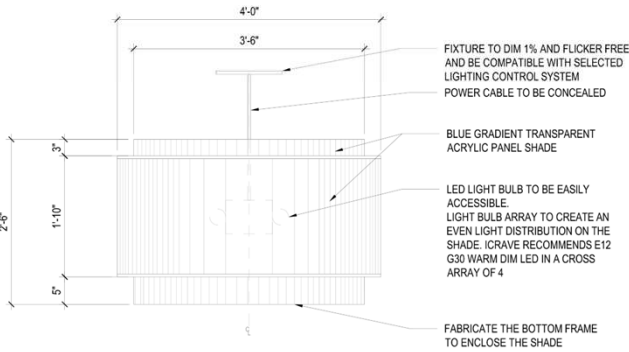


[illegible]

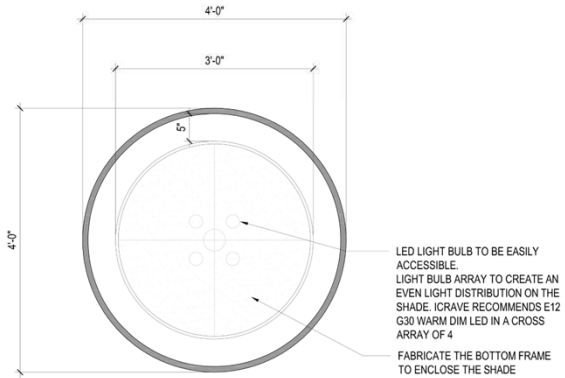
Custom - Pendants



NOTE
BLUE GRADIENT LANTERN FABRIC



2 FRONT ELEVATION - PENDANT
SCALE: 3/4"=1'-0"

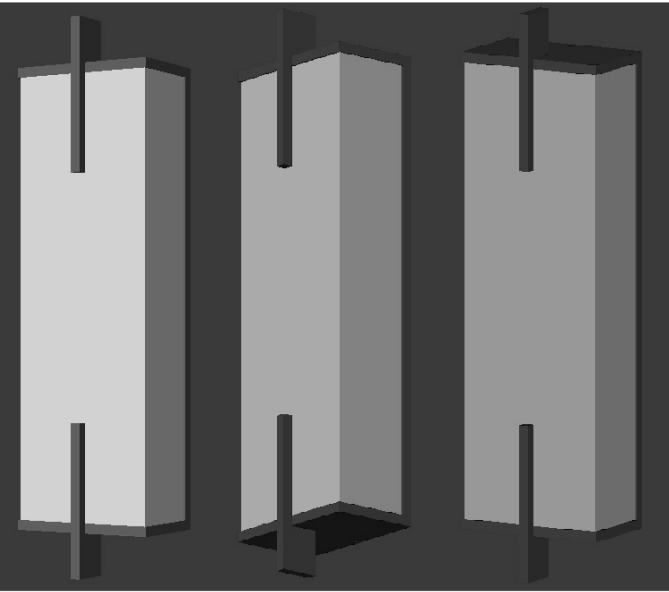
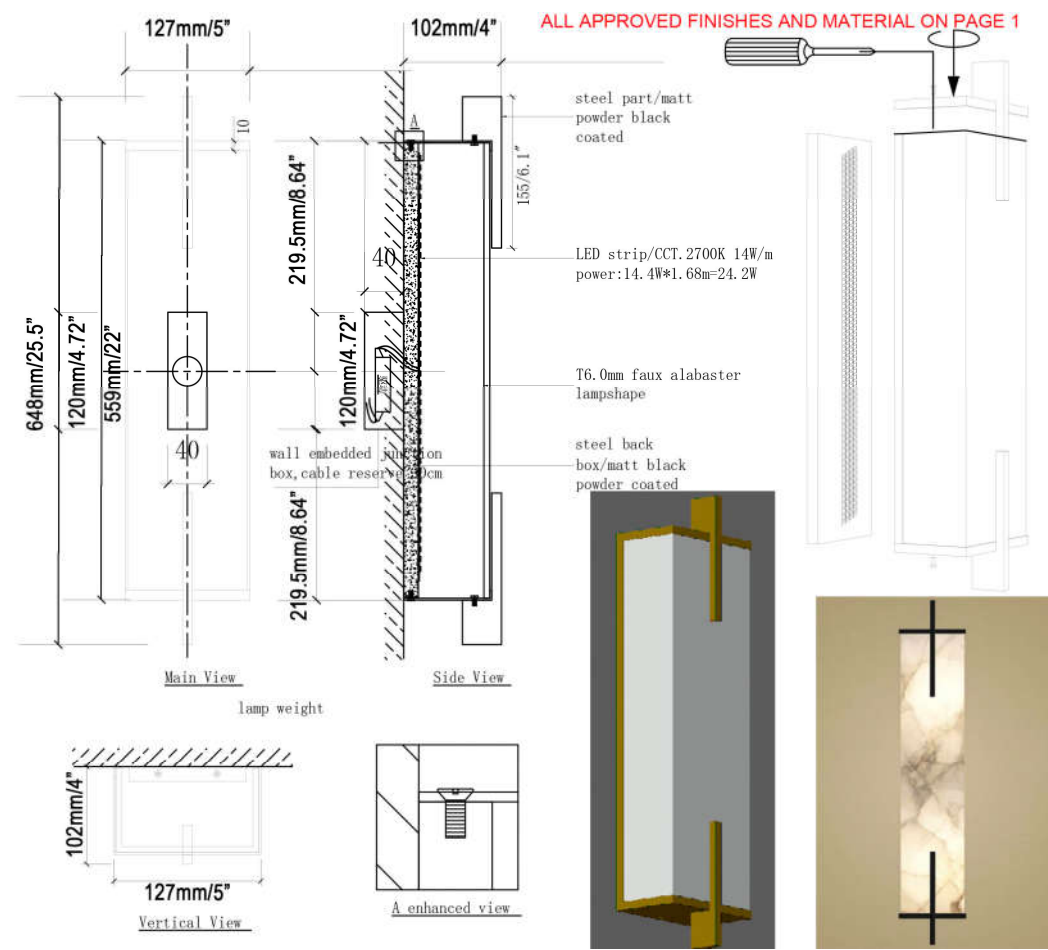


1 PLAN - PENDANT
SCALE: 3/4"=1'-0"

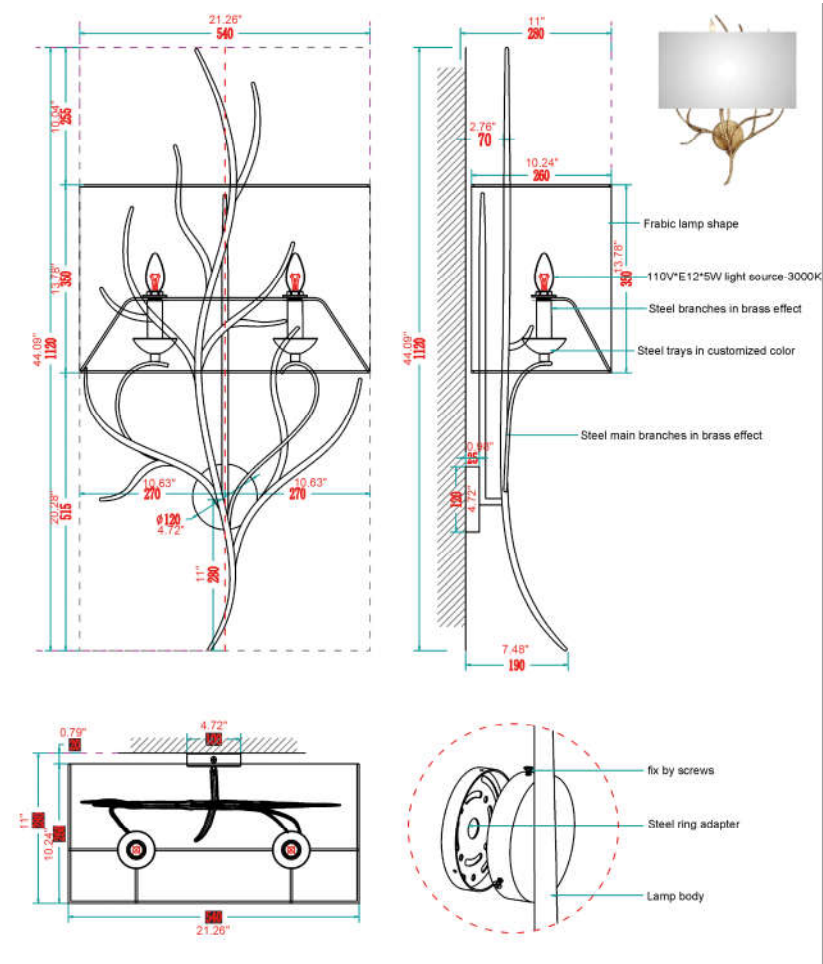
- NOTES:
1. CONSTRUCTION DETAILS ARE FOR DESIGN INTENT ONLY. FINAL CONSTRUCTION METHOD TO BE CONFIRMED BY FABRICATOR IN SHOP DRAWINGS (SHOP DRAWINGS, MOCK-UPS & FINISH SAMPLE TO BE SUBMITTED BY FABRICATOR & APPROVED BY DESIGNER). ALL MILLWORK & BUILT-IN DIMENSIONS TO BE FIELD VERIFIED.
 2. DIMENSIONS TO BE VERIFIED IN FIELD.
 3. QUANTITIES ARE APPROXIMATE AND TO BE CONFIRMED BY PURCHASING AGENT.
 4. RENDERINGS ARE FOR REFERENCE ONLY. FOR FINISHES, REFER TO DRAWINGS.

Wall Scones

Custom - Wall

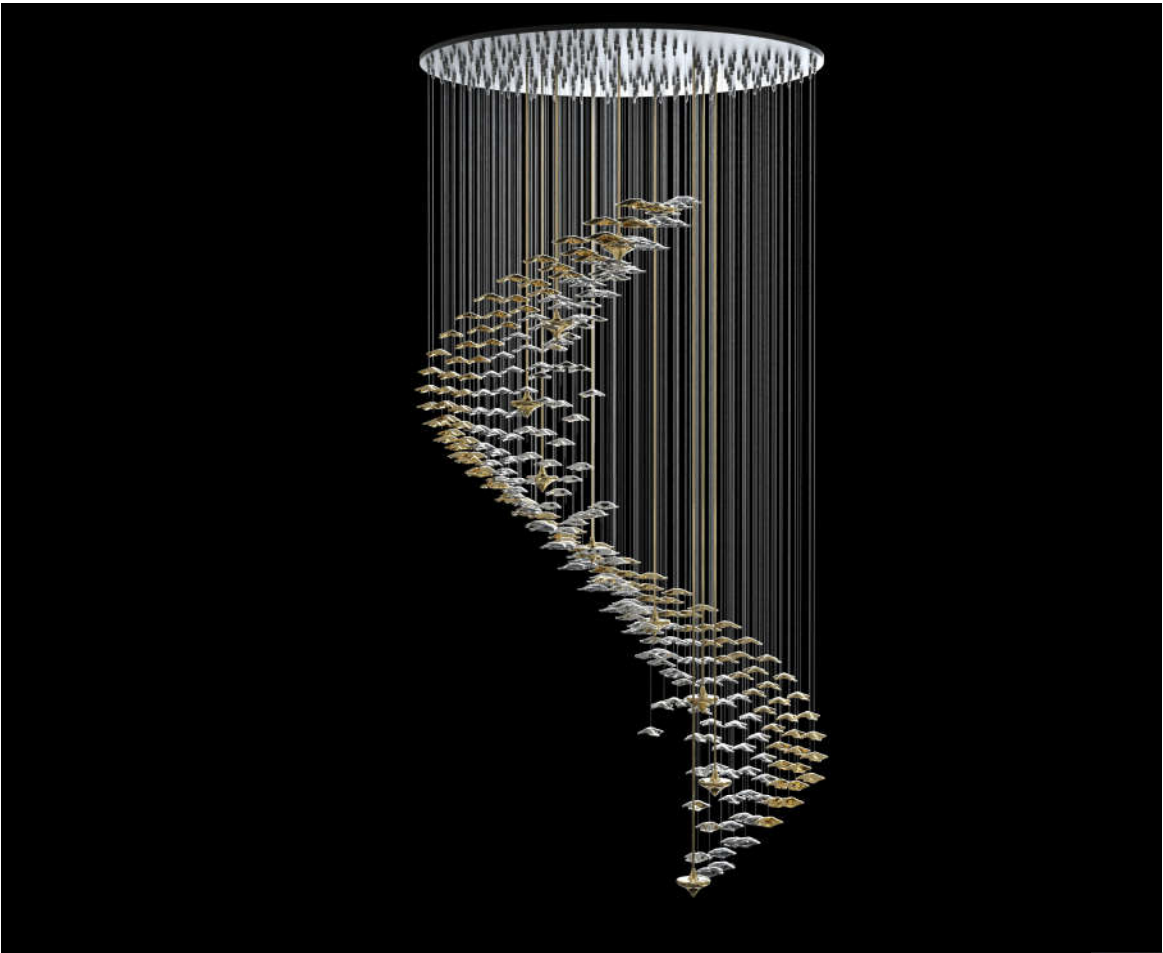
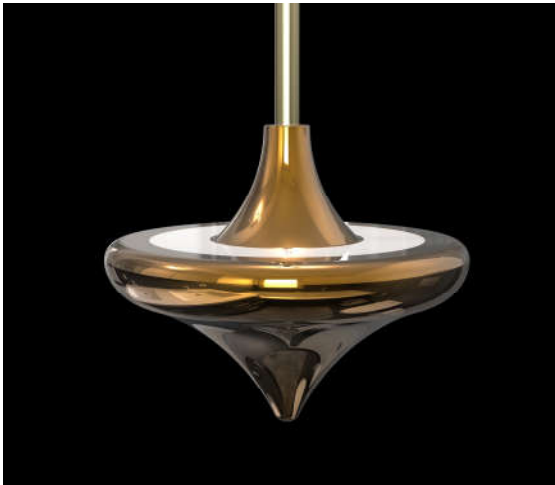


Custom - Wall

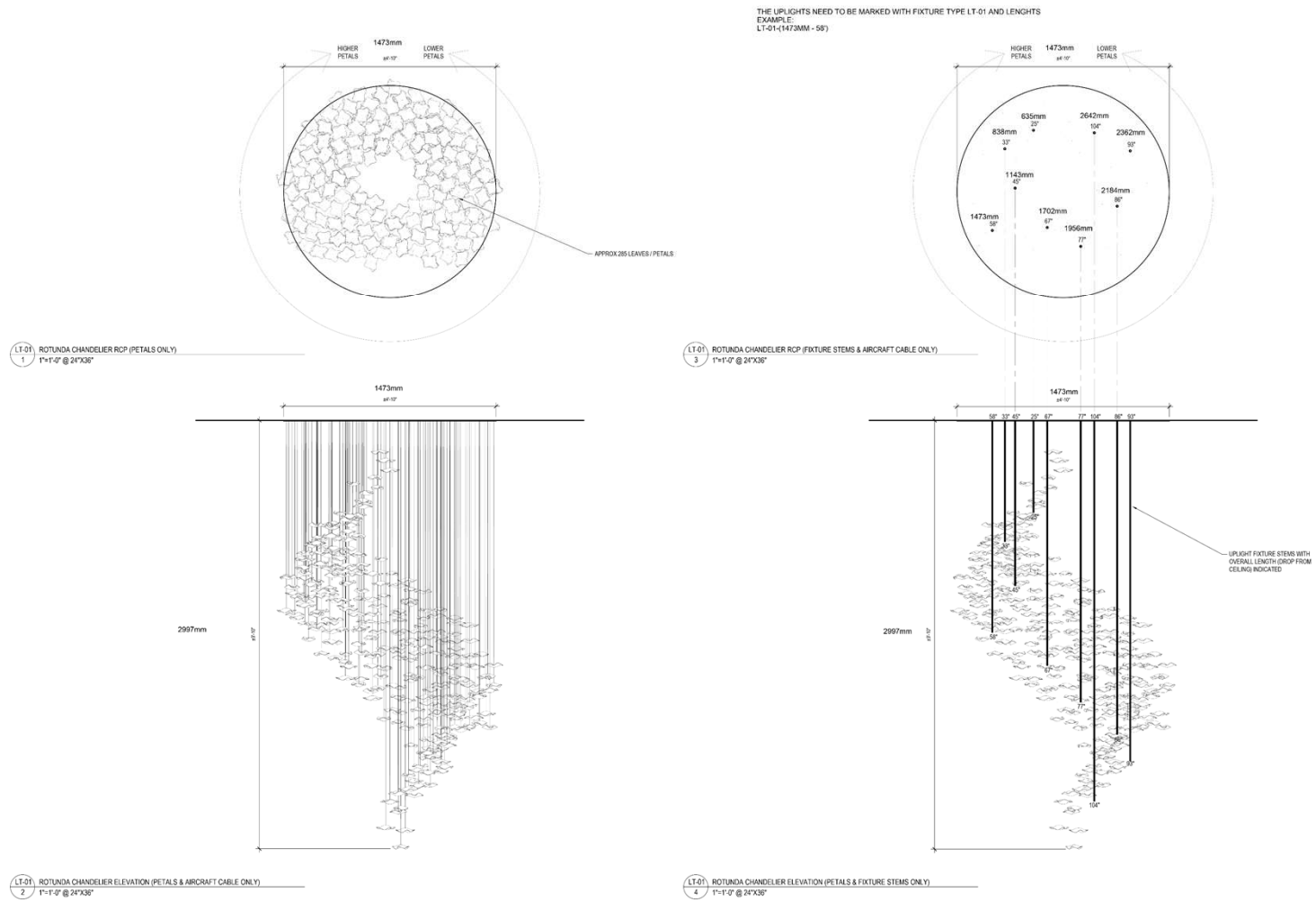


Modular Systems

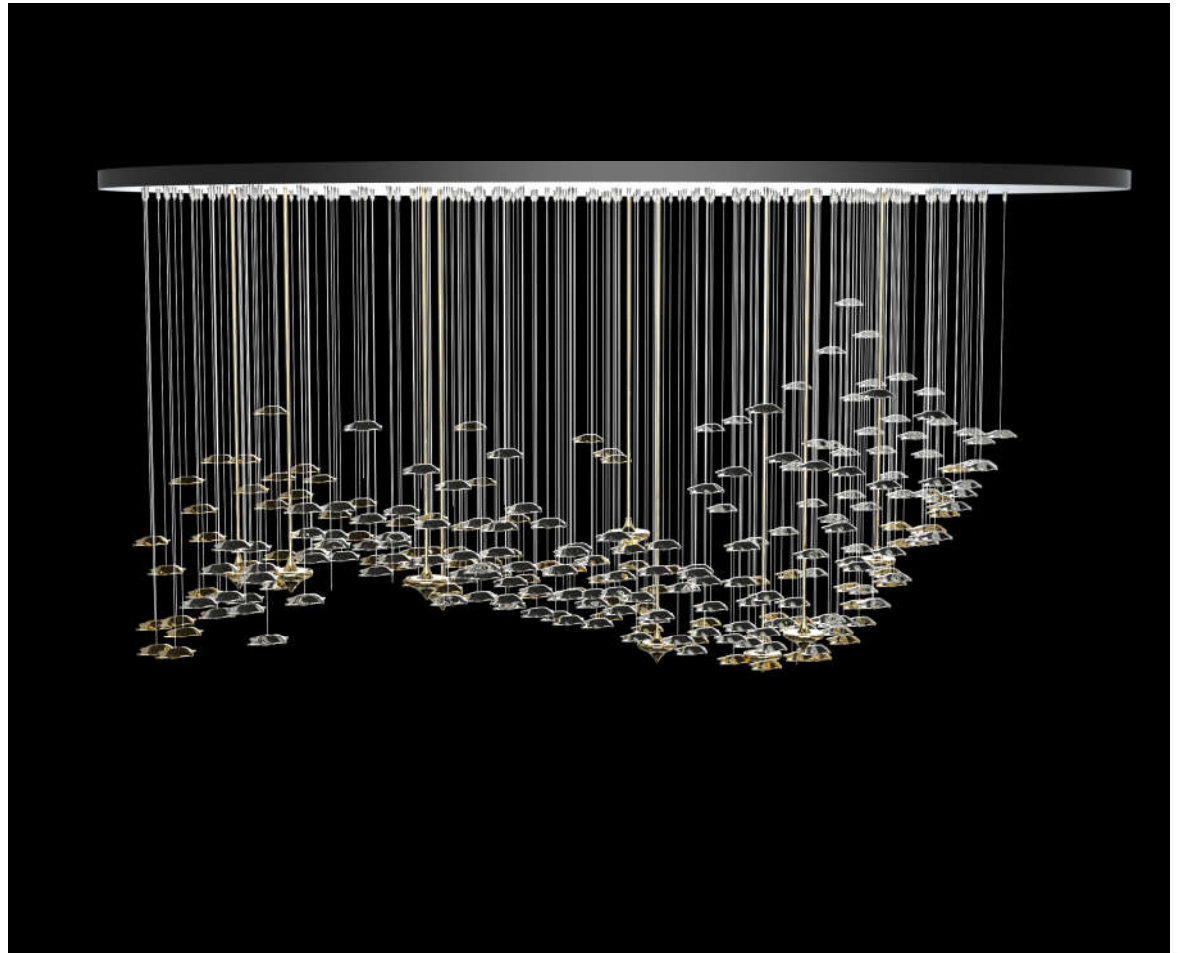
Modular System



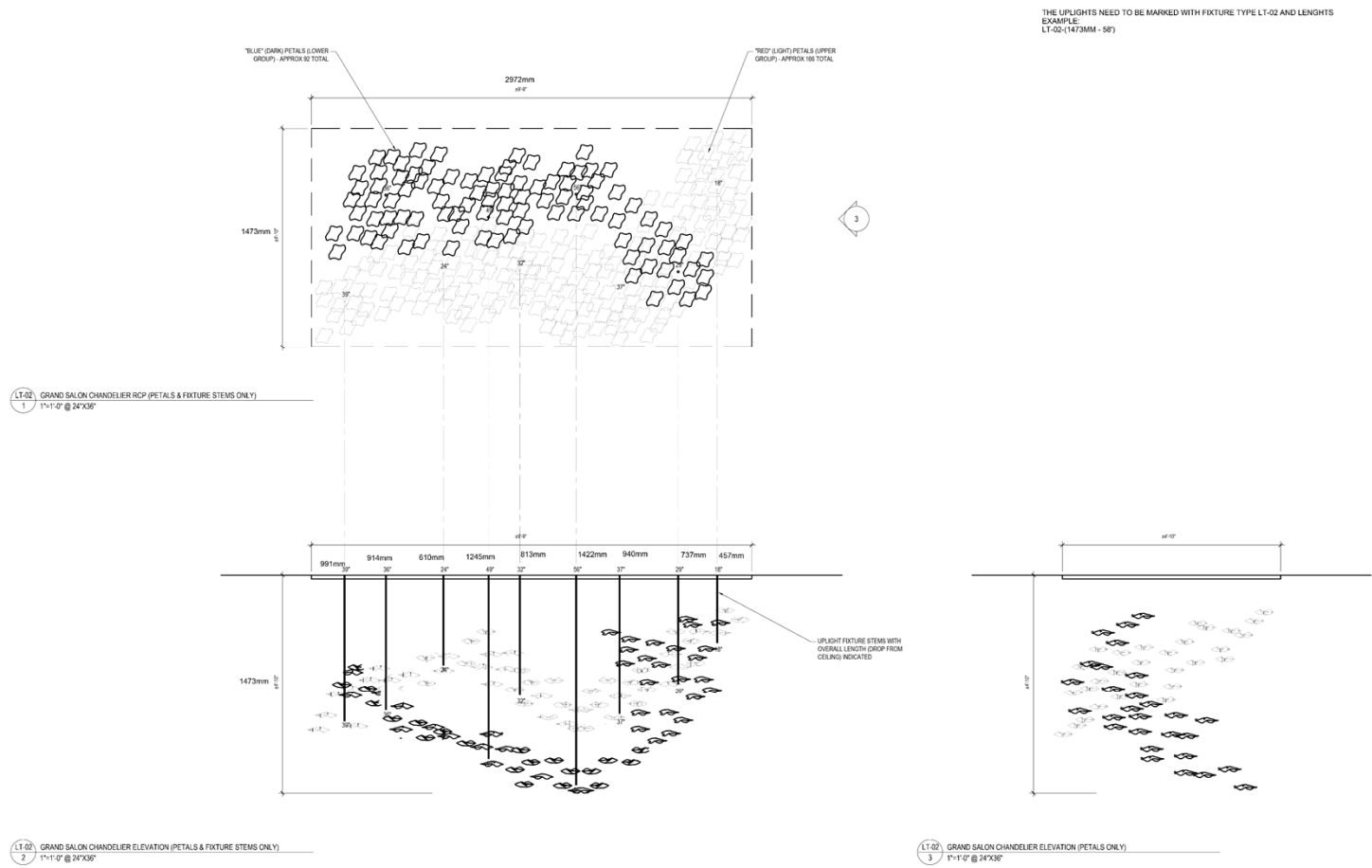
Modular System



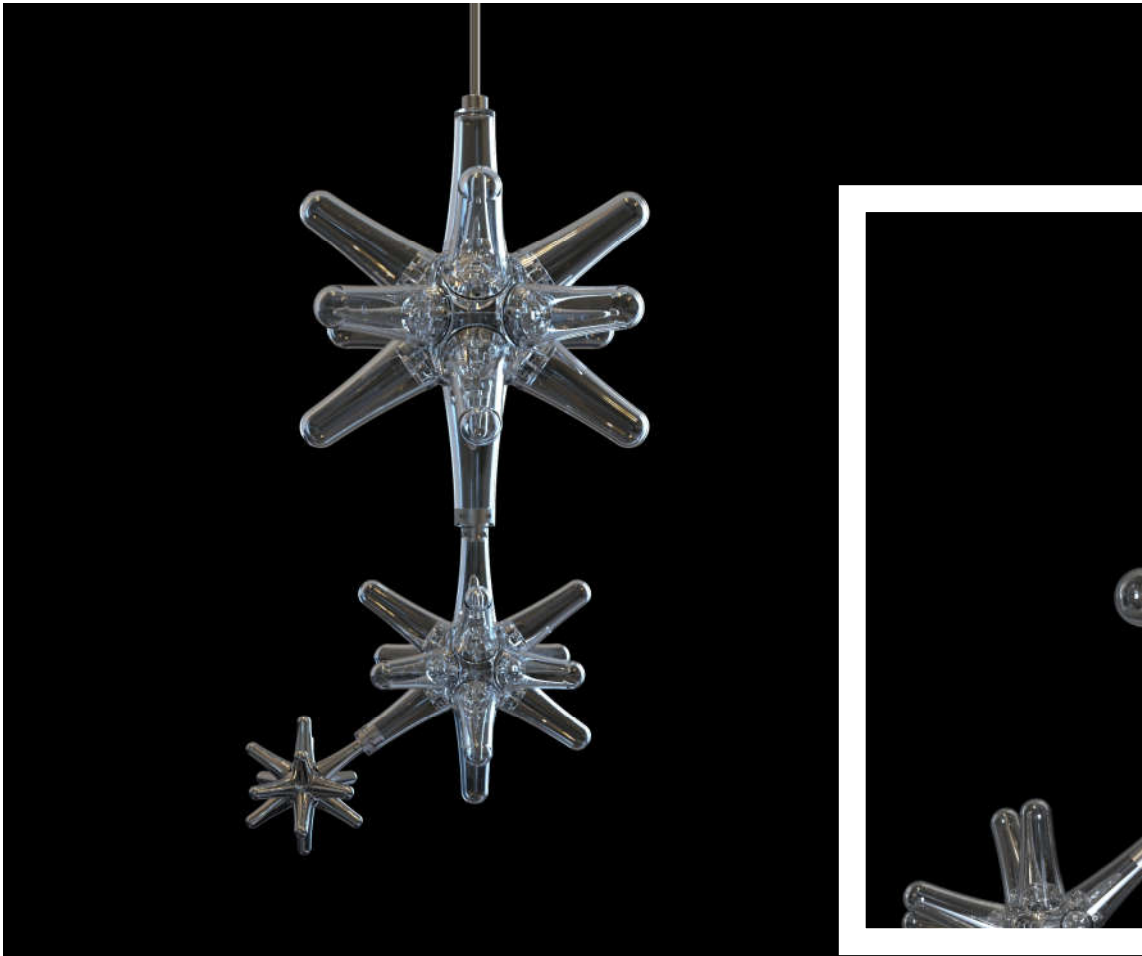
Modular System



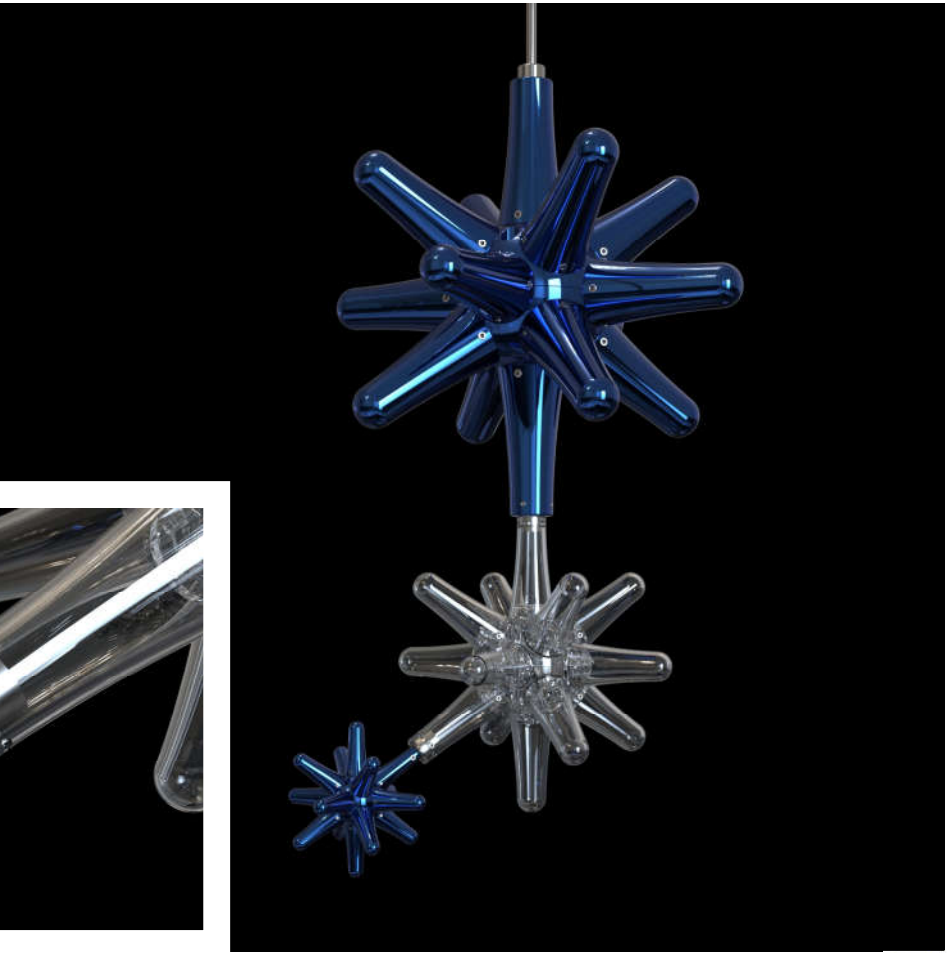
Modular System



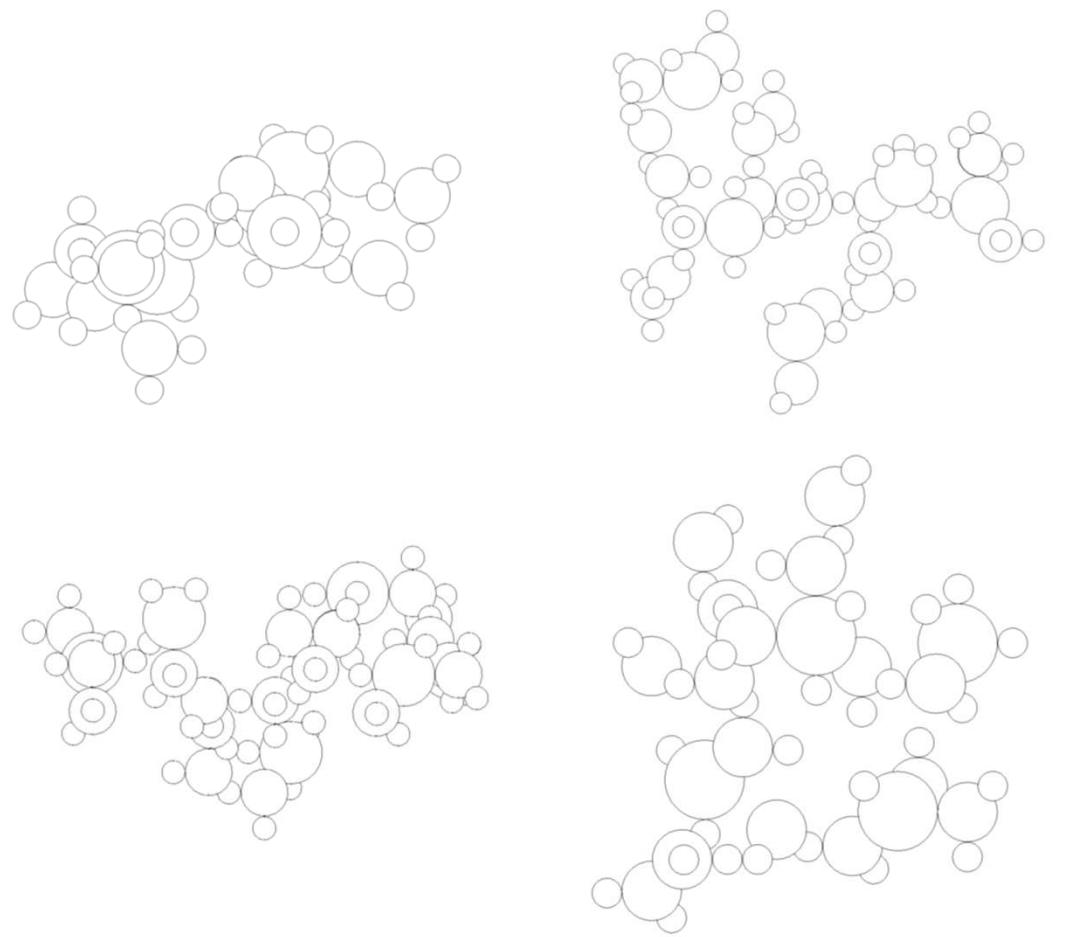
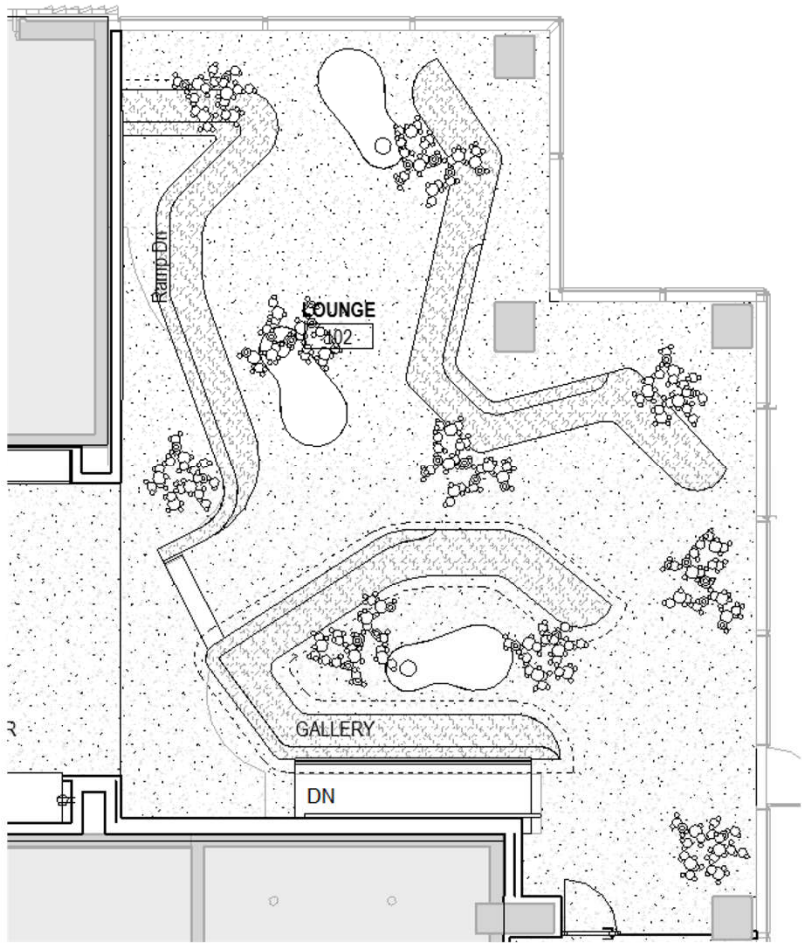
Star System



Modular System

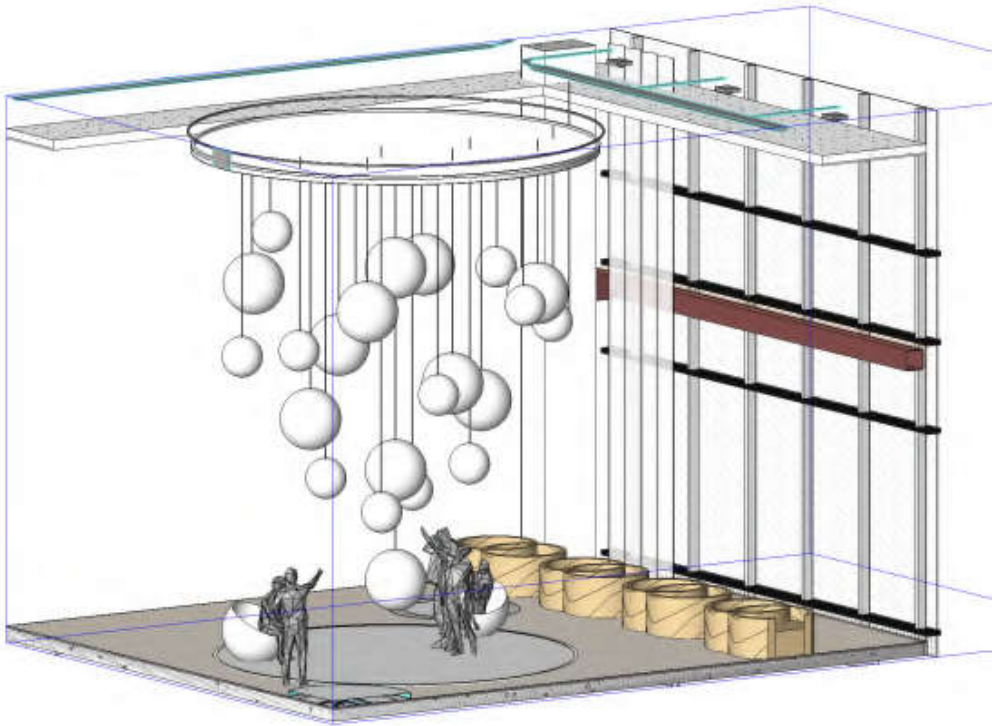


Modular System – Sample Layouts



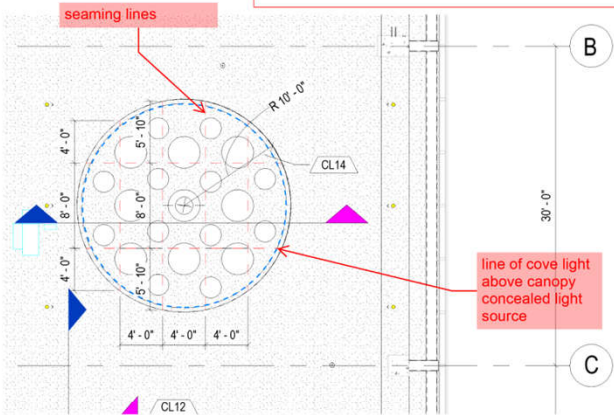
Statement Installations

Statement Installations



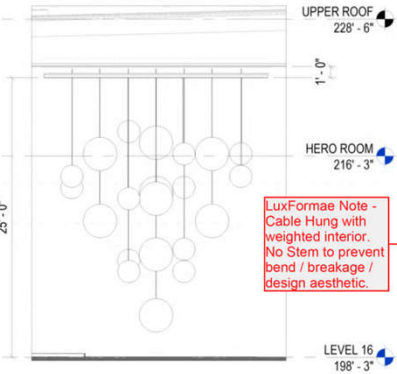
Statement Installations

PLAN



GENERAL NOTE:
- NO EXPOSED FASTENERS
- CANOPY REFLECTIVE MATERIAL SURFACE SHOULD BE RIGID ENOUGH NOT TO "OIL CAN"
- SEAMS SHOULD BE AS TIGHT AS POSSIBLE.

ELEVATION



COUNT:

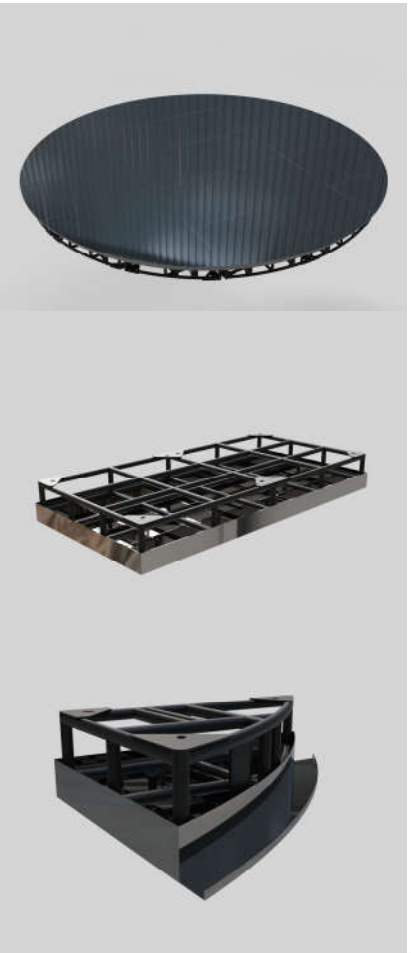
(1) 20" canopy with LED cove light surround
*hardwired light

(11) 3' dia. spheres
(12)- 2'dia. spheres
*hang with skinny stem - same finish as balls

Finish: Mirror finish

FREIGHT ELEVATOR HT

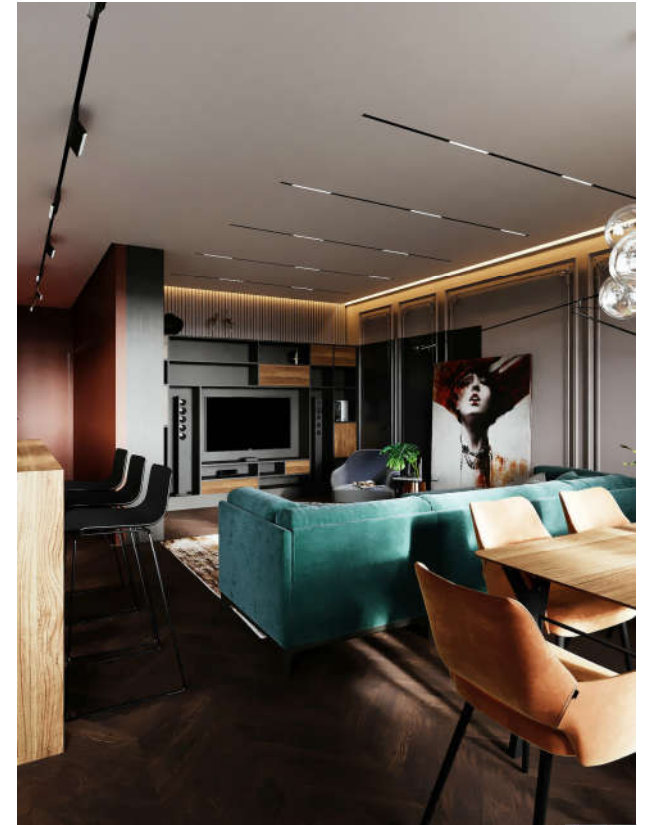
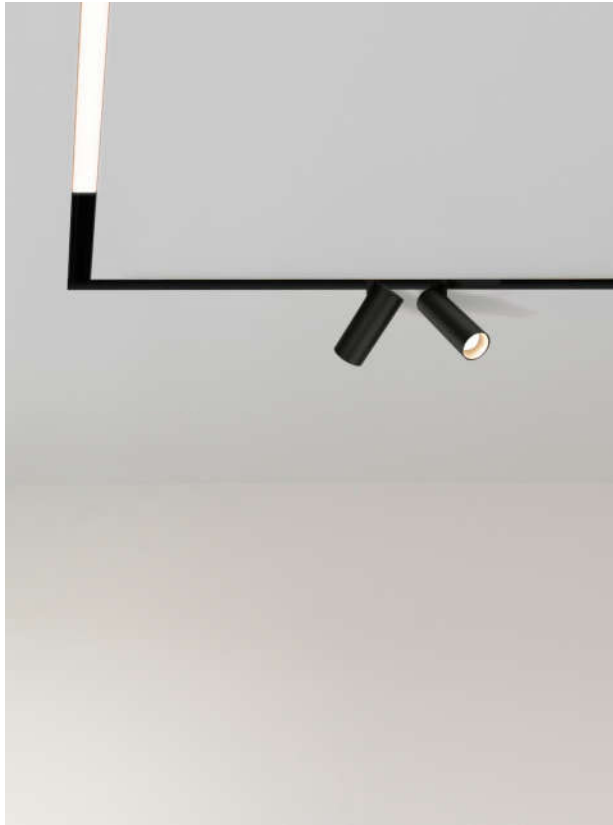
Weight Limit: 4500 lbs
Dimensions:
• Door Height: 8' - 0"
• Level LD Door Header @ 7'-0"
• Door Width: 4' - 0"
• Cab Width: 5' - 8 1/2"
• Cab Depth: 8' - 1"
• Cab Height: 9' - 0"



CATALOG PRODUCT

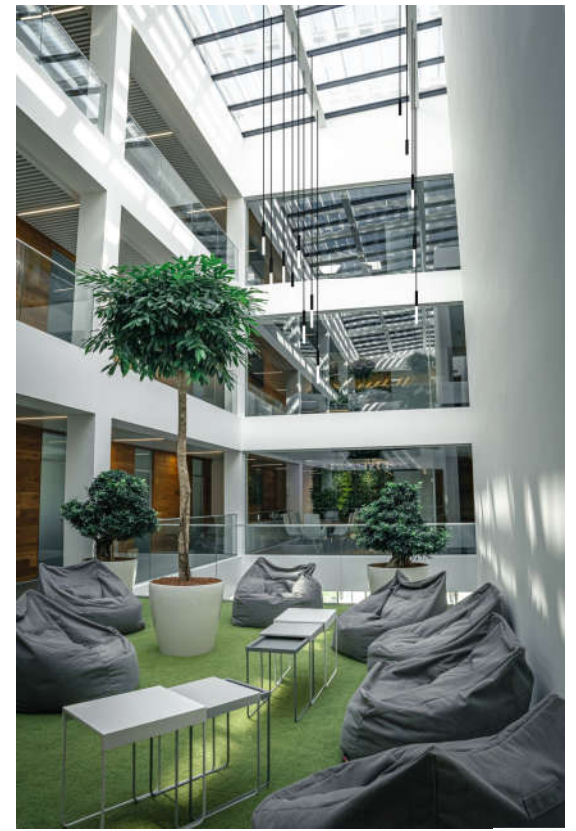
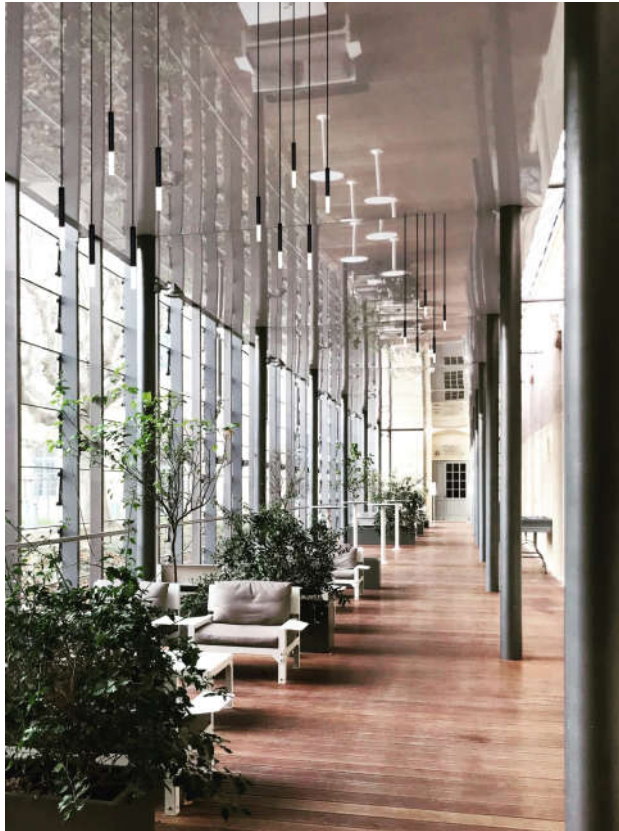
MAGS – Magnetic Track

Seamless, versatile, functional, aesthetic, magnetic track system for recessed, surface mount, and suspended applications. Offered in linear or circular forms in two widths - regular and extra sottile.



DECO – Pendants

Deco Series Pendants offer a modern design aesthetic with excellent lighting performance and sleek styling. Use DECO for your highest-profile hospitality, lobby, café, and circulation areas along with any other space that can utilize a strong vertical linear lighting presence.



What is next for 2025

- Catalog expansion with Extra Sottile Mags Series
- Lightbox
- Modular System Glass Leave with Up-light
- Pipe Modular System
- Gensler Designed Product

