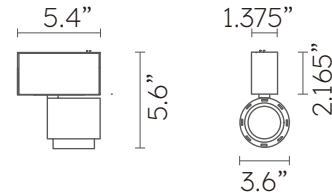


MAGS Ø3.6" SPOT

MAGS Series Light Fixture. Fixture engages with track system electrically and mechanically via magnetic connection and can be easily moved along the track. Model MAGS-S92R is a DRY rated Magnetic Track, Adjustable Spotlight Aluminum light offered in a Black or white finish. This Light Fixture is CETL listed and contains 1 lights, total of 15 watts, delivering 820 lumens using a Osram LEDModule with +90 CRI. Dimmable via 24V Volt Remote Driver (sold separately). Choice of 10, 20, or 30 degree beam spread. Choice of 2700K, 3000K, 3500K, or 4000K CCT. Spotlight Dimensions are 7.125 inches long x 5.5 inches diameter with a 90 degree tilt and 360 degree rotation.



Model Number Configuration

S92R

Optics

- D10 - 10°
- D20 - 20°
- D30 - 30°

--

CCT

- 27 - 2700K
- 30 - 3000K
- 35 - 3500K
- 40 - 4000K

--

Finish

- BL - Black
- WH - White

Electrical

Voltage	24V
Dimming	Driver dependent
Power	15W
Lumens	820
Power factor	N/A

Environmental

CRI	>90
Environment	Dry
Light Source	LED
Chip	Osram
Life rating	N/A
Listings	C-ETL Listed to UL1598

Mechanical

Installation	N/A
Cord Legth	N/A
Dimensions	7.125"L x 5.5" diameter with a 90 degree tilt and 360 degree rotation.
Weight	1.37 lbs
Material	Aluminum
Finish	Powder Coated

Driver Options

Driver code	PS-96-24-UNI-UNI - Universal input (120-277V) and Universal dimming (ELV, TRIAC, 0-10V) 0-100% dimming. Up to 20 Small or 10 Large Pendants.
--------------------	--

Photometric and Light Distribution

D10				D20			
10° 	h(m)	E(lx)	Φ(m)	20° 	h(m)	E(lx)	Φ(m)
	1	9750	Φ0.20		1	6022	Φ0.25
	2	2437	Φ0.40		2	1505	Φ0.50
	3	1083	Φ0.60		3	669	Φ0.75
	4	609	Φ0.80		4	376	Φ1.00
	5	390	Φ1.00		5	240	Φ1.25
D30							
30° 	h(m)	E(lx)	Φ(m)				
	1	2204	Φ0.39				
	2	551	Φ0.79				
	3	244	Φ1.19				
	4	137	Φ1.59				
	5	88	Φ1.99				